

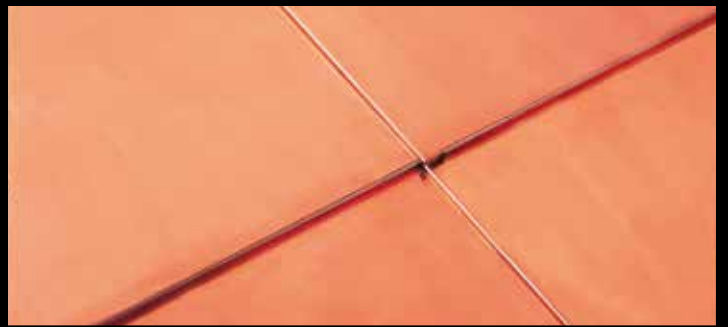
Prefabricated TECU® System-Shingles



KME Germany GmbH & Co. KG
Prefabricated TECU® System-Shingles
[GB]



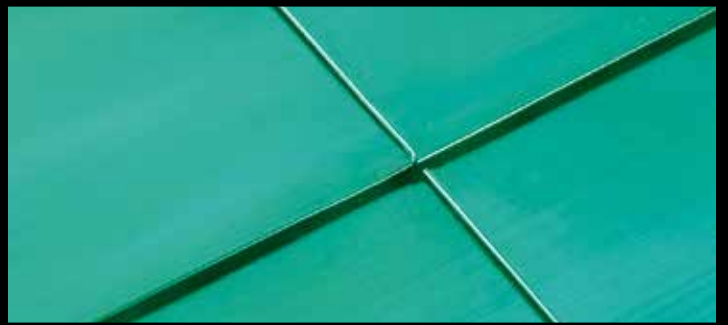
TECU® Classic and TECU® Classic_coated
The bright red rolled copper
TECU® System Shingle



TECU® Oxid
The brown pre-oxidised copper
TECU® System Shingle



TECU® Patina
*(including TECU® Patina_Hamburg,
_Marrakesh, _Boston, _Havana and _Baku)*
The green pre-patinated copper
TECU® System Shingle

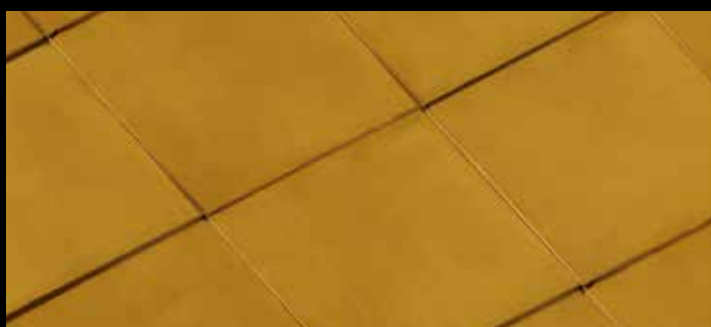


TECU® Zinn
The matt gray tinned Copper
TECU® System Shingle



TECU® Copper for Roofing and Façade

7 good reasons for TECU® Copper - durable-long lasting, representative, value-stable, natural material, environmental friendly, makes curious and easy to transform.



TECU® Brass
The alloy of copper and zinc
TECU® Shingles



TECU® Bronze
The alloy of copper and tin
TECU® Shingles



TECU® Gold
The alloy of copper and aluminium
TECU® Shingles



Shingles

- horizontal
- diagonal
- long strips
- overlapping
- rhomboids sharp edges
- rhomboids round edges

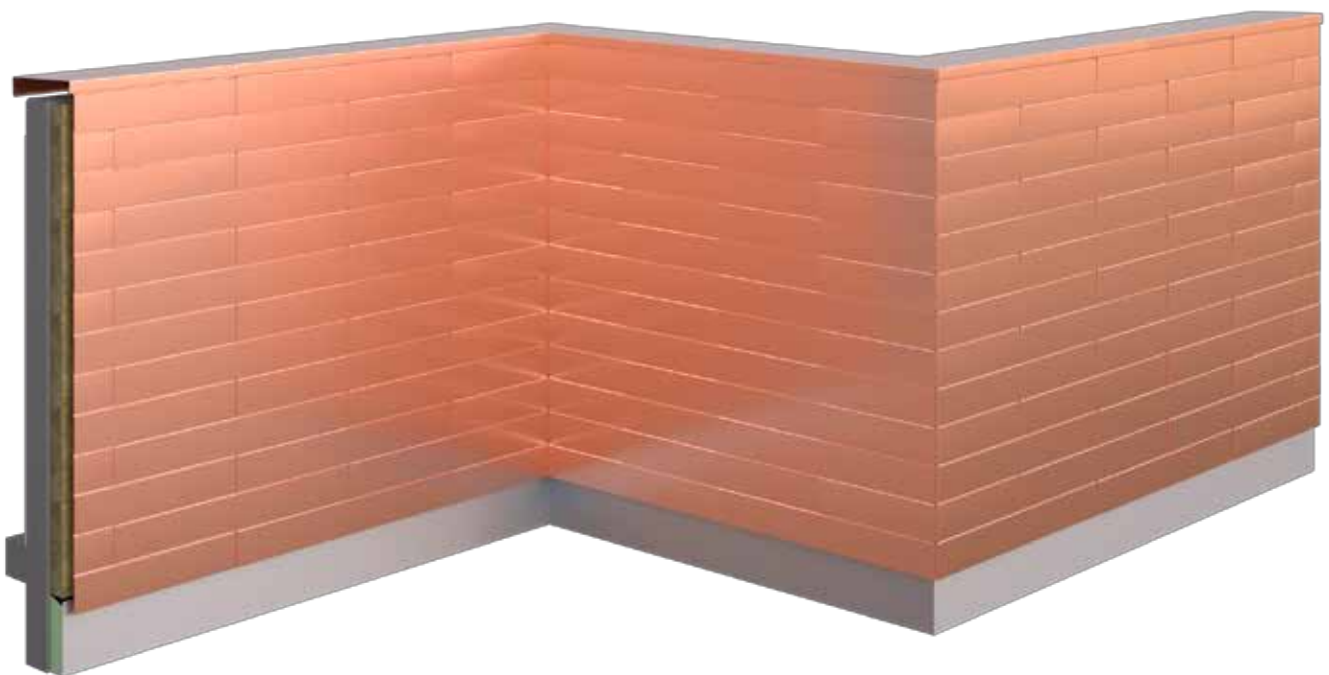
Besides their special aesthetic qualities, TECU® System Shingles and Rhomboids offer decisive economic advantages in façade design: cladding elements are laid simply by hanging them and interlocking them with each other.

Shingles are cladding elements divided into small section starting from 265 x 265 mm in various forms.

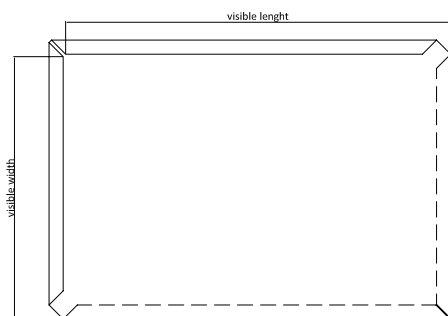
The TECU® system shingles have a 180° border on all sides. Two sides are provided with a fold coming forward or with a downstand. The individual elements are available as left or right tiling. All folds and notches are automatically pre-processed in the factory. At the edges, all the usual processing techniques such as bevelling, folding and bending can be used. This ensures that the corners of buildings and connections to other constructional elements such as windows and doors are completely weatherproof.

The installation of the shingles and rhomboids is very easy and takes place through the use of nails, screws or rivets directly to the subconstruction. The system can be completed with the related facade components (substructure, isolation, fixing devices as well as connecting profiles).

Horizontal shingles



Dimensions & Surfaces



The **TECU®** system shingles have a 180° border on all sides. Two sides are provided with a fold coming forward or with a downstand. The individual elements are available as left or right tiling.

They are installed with clips which are fixed directly either to a wooden or metal substructure. By simply hanging the shingles in the all-round folds it is possible to create a reliable and visually interesting cladding in no time at all.

Ordering size

Shingles standard visible widths

Shingles standard visible lengths

Shingles standard lengths for Patina

Material thickness

Installation

length * height of visible part of shingle

265 / 330 / 430 / 530 / 600 mm

from 263 to 600 mm

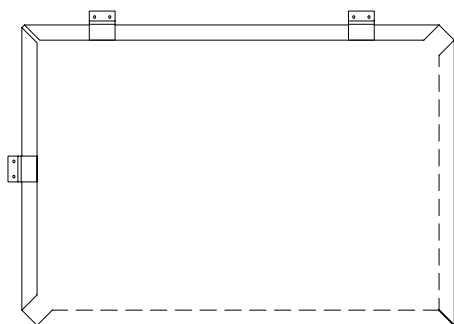
265 / 330 / 430 / 530 / 600 mm

0,6 - 0,7 mm

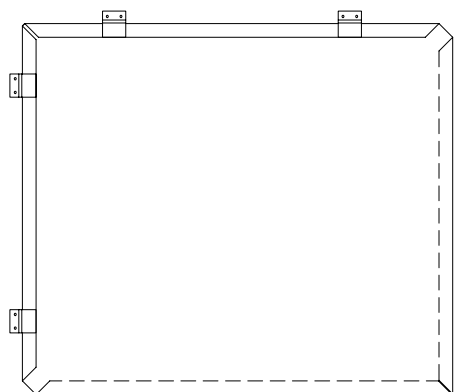
from bottom to top

Fixing recommendations

The installation technique is based on the shingle type and dimensions

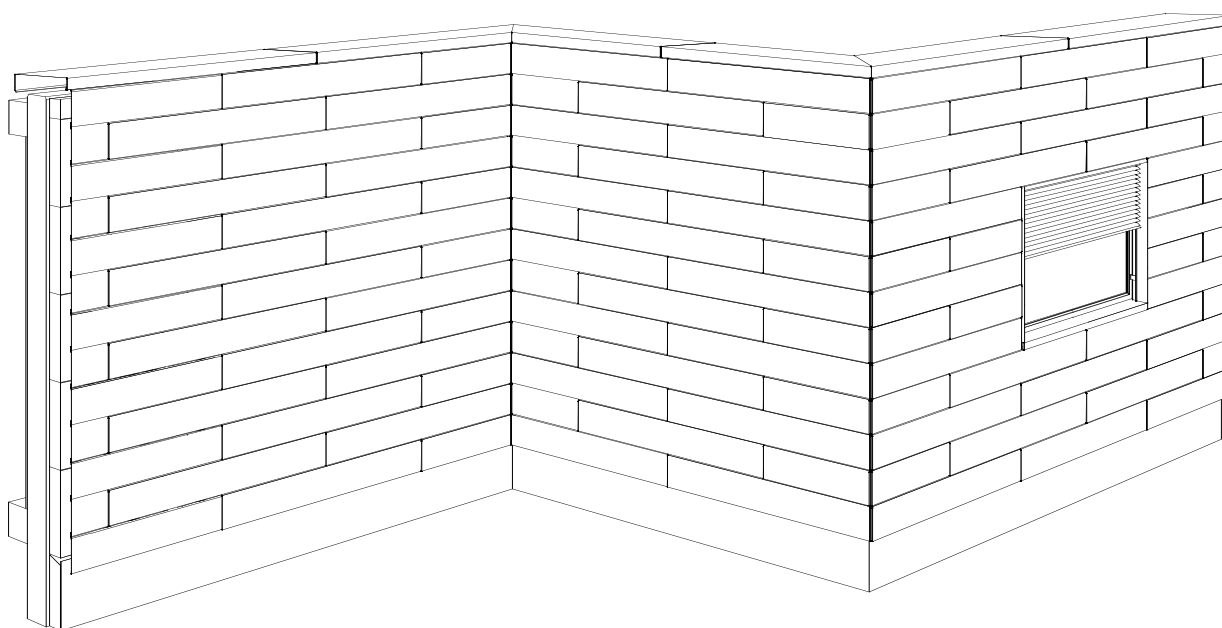


Standard shingles; from 265 * 265 mm to 430 * 430 mm: 3 clips

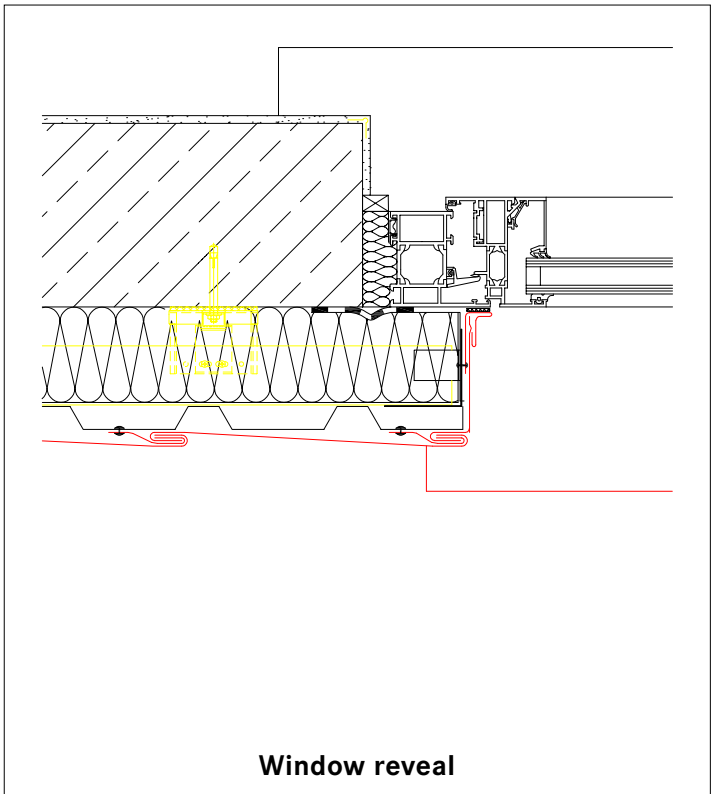
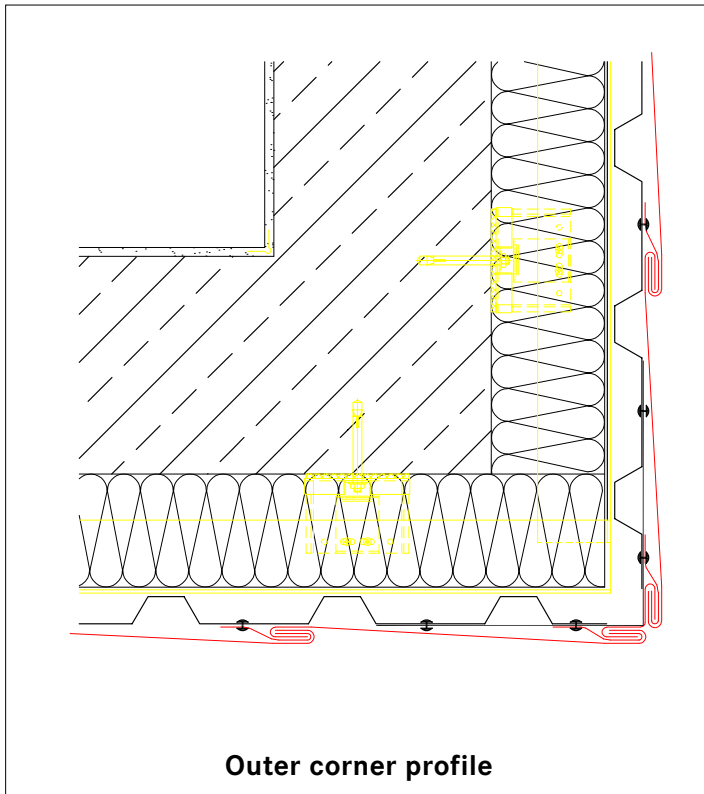
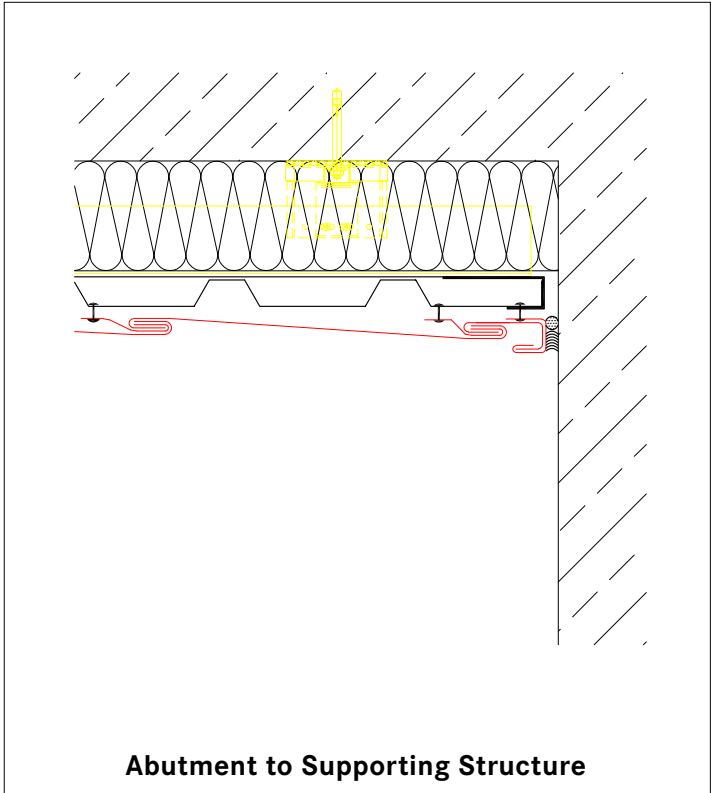
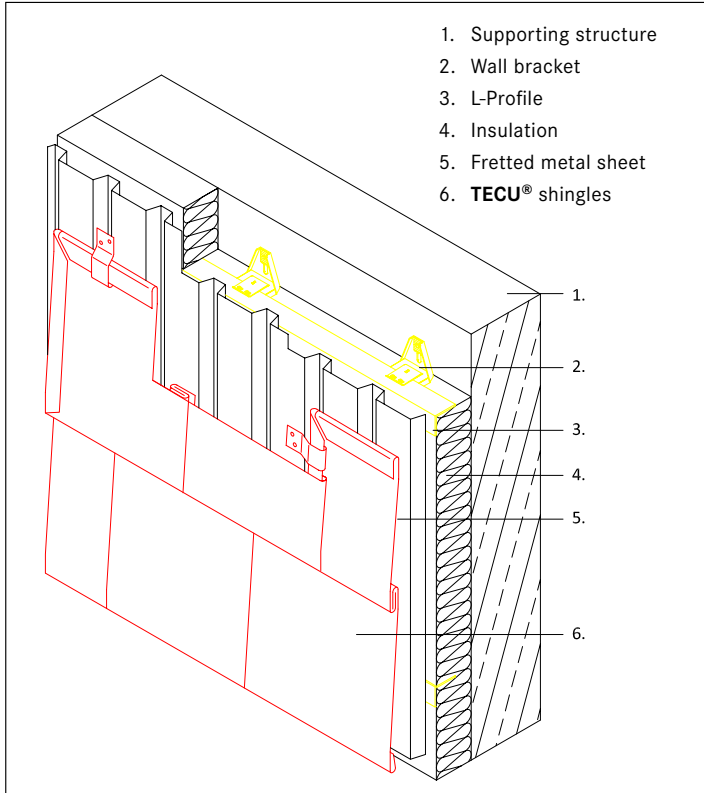


Standard shingles 530 * 530 mm, 600 * 600 mm, 600 * 430 mm: 4 clips

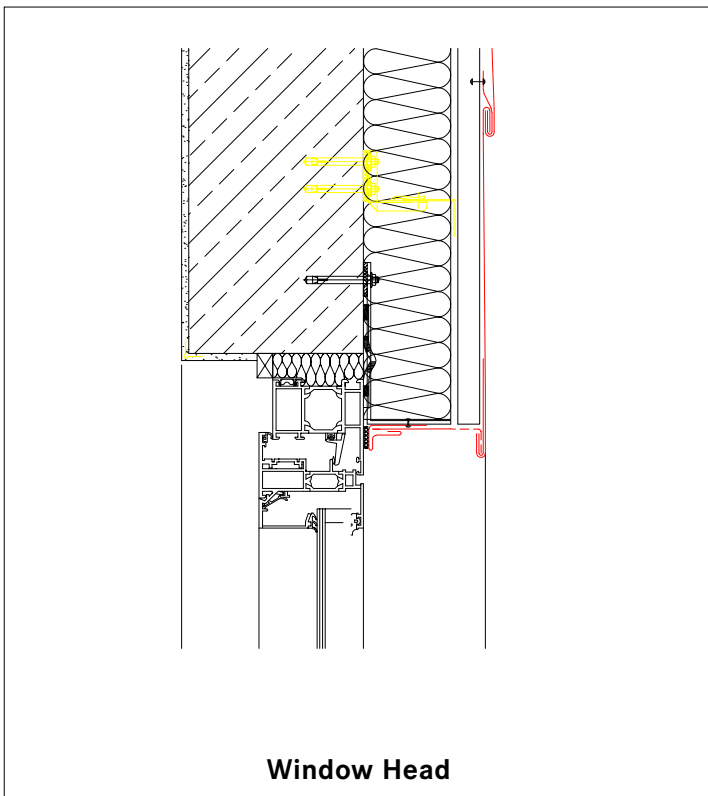
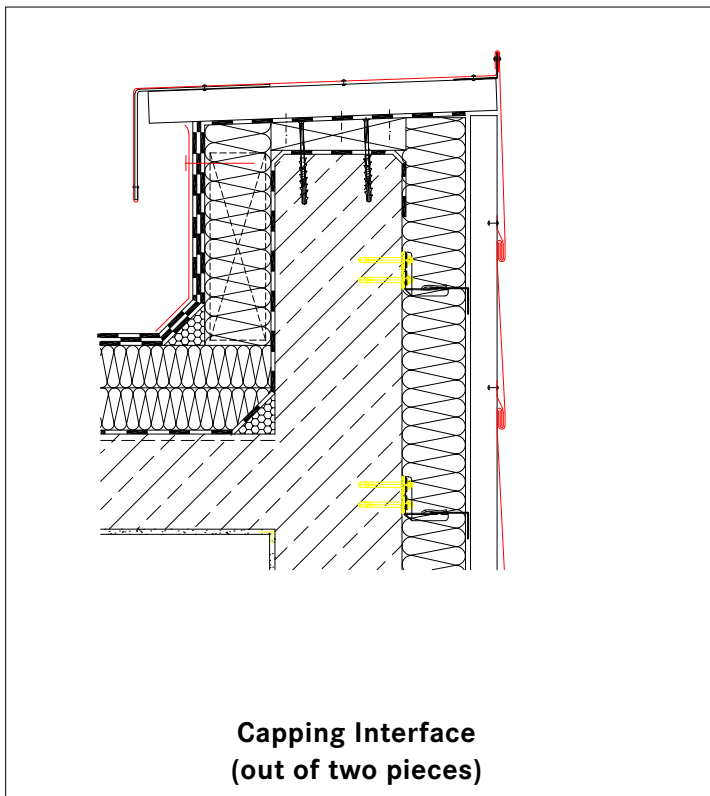
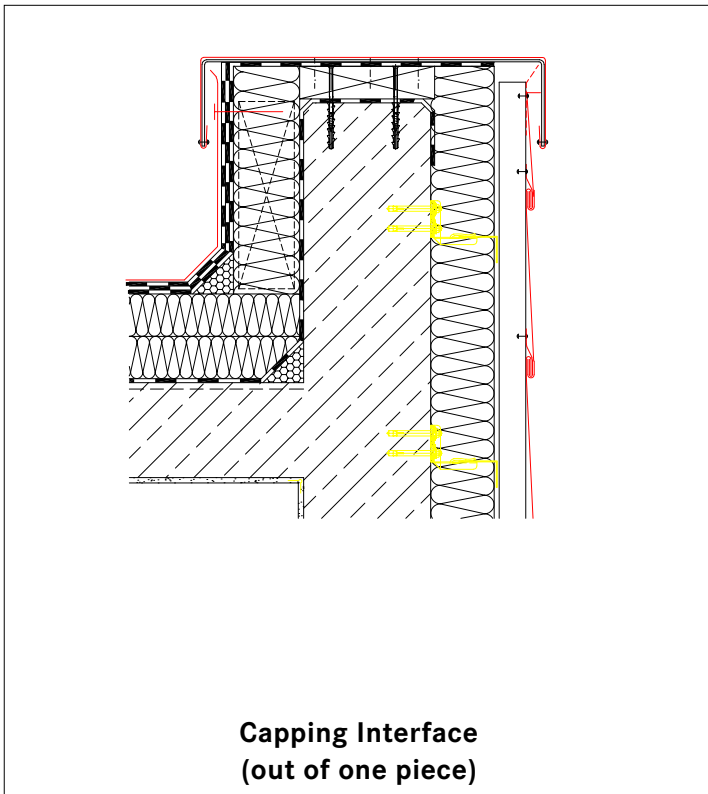
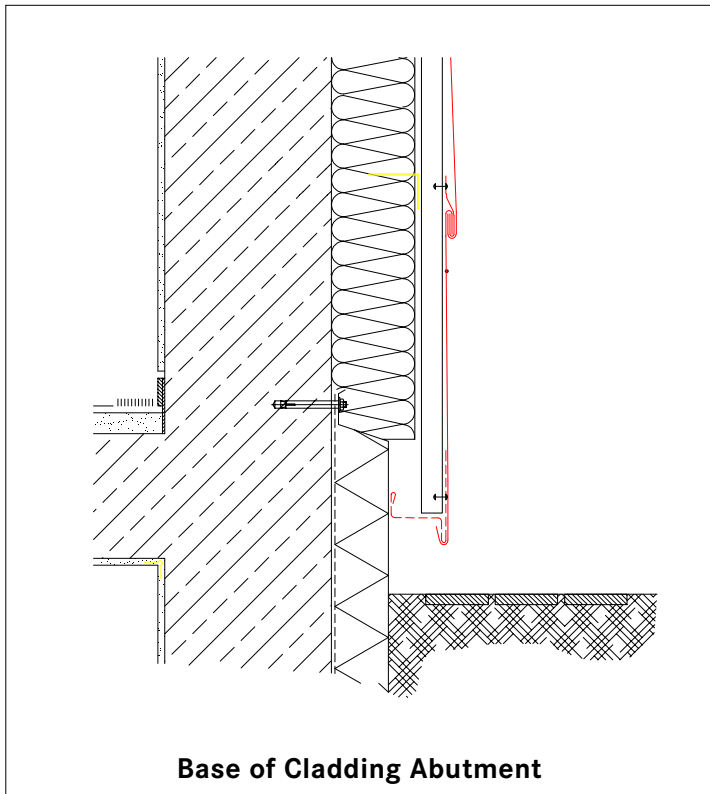
Connection profiles



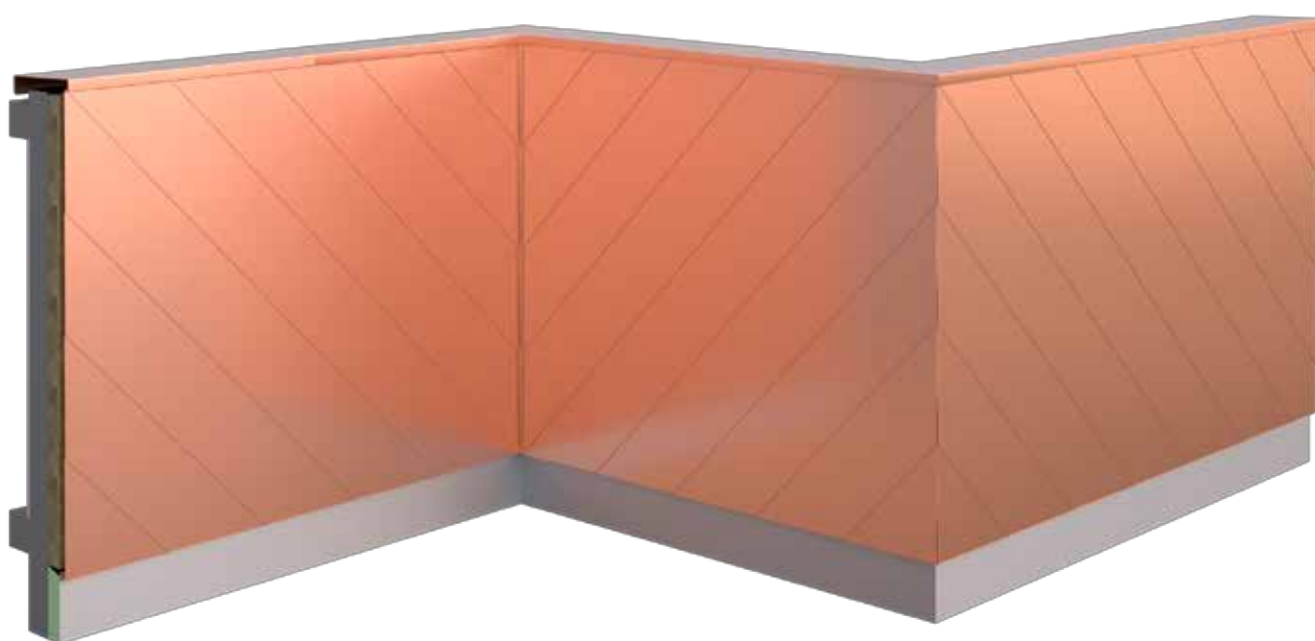
Façade build-up



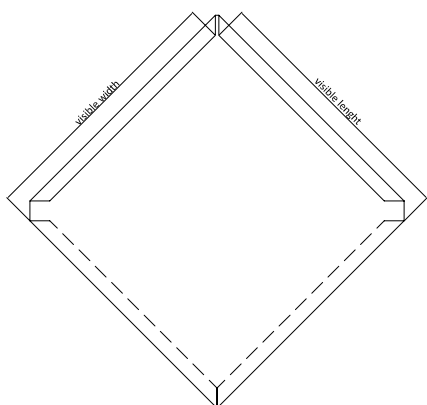
Façade build-up



Diagonal shingles



Dimensions & Surfaces

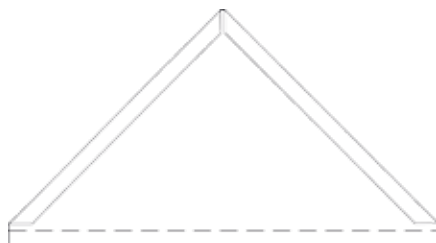


The **TECU**[®] system shingles have a 180° border on all sides. Two sides are provided with a fold coming forward or with a downstand. The individual elements are available as left or right tiling.

They are installed with clips which are fixed directly either to a wooden or metal substructure. By simply hanging the shingles in the all-round folds it is possible to create a reliable and visually interesting cladding in no time at all.

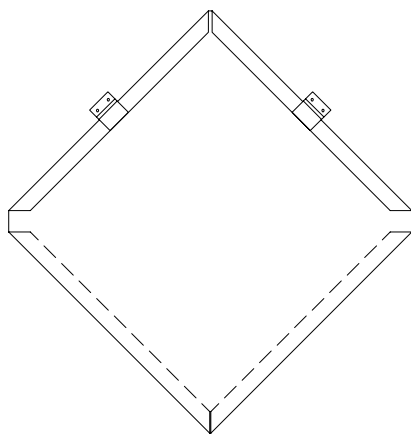
Ordering size
Shingles standard visible widths
Shingles standard visible lengths
Shingles standard lengths for Patina
Material thickness
Installation
Special shingle

length * height of visible part of shingle
 265 / 330 / 430 / 530 / 600 mm
 from 263 to 600 mm
 265 / 330 / 430 / 530 / 600 mm
 0,6 - 0,7 mm
 from bottom to top
 starting shingles

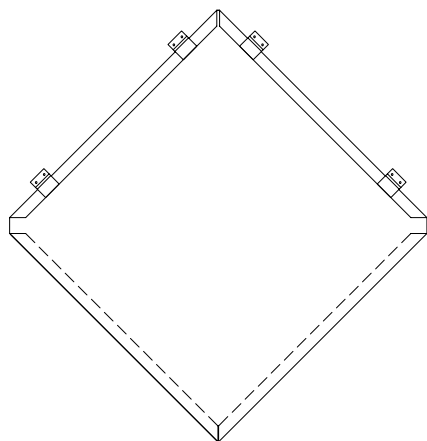


Fixing recommendations

The installation technique is based on the shingles dimension.

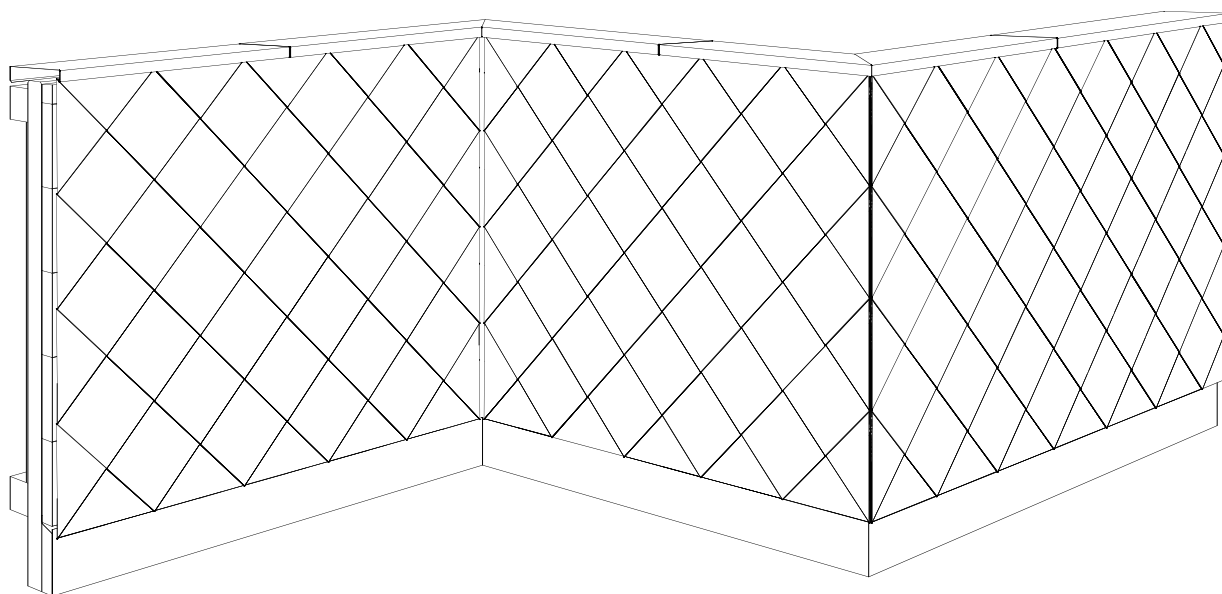


From 265 * 265 mm to 430 * 430 mm: 2 clips

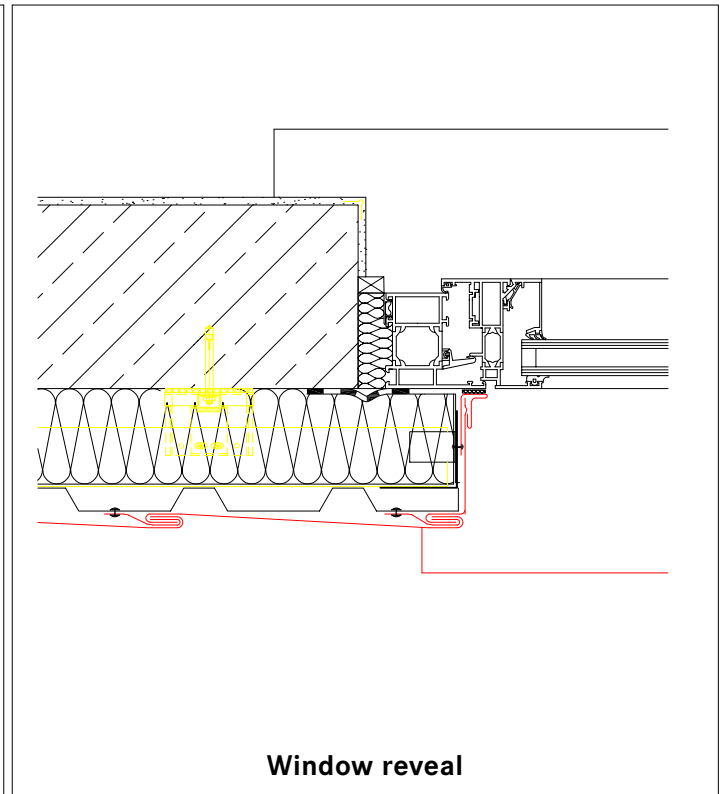
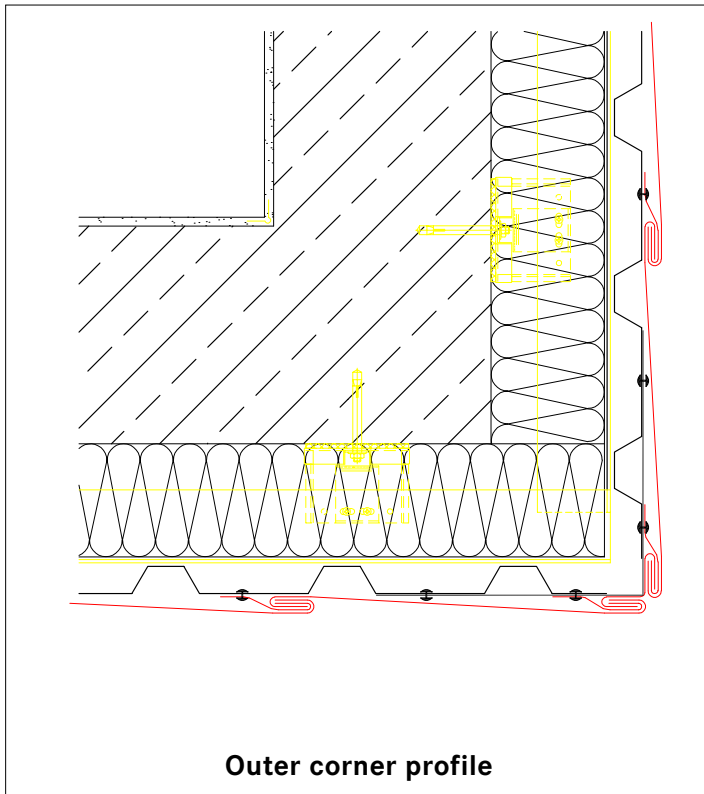
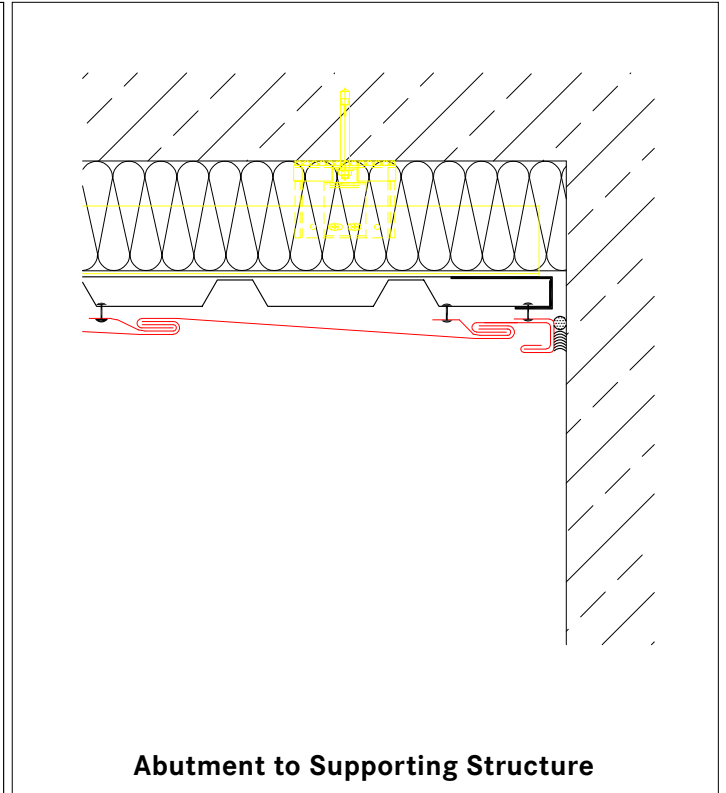
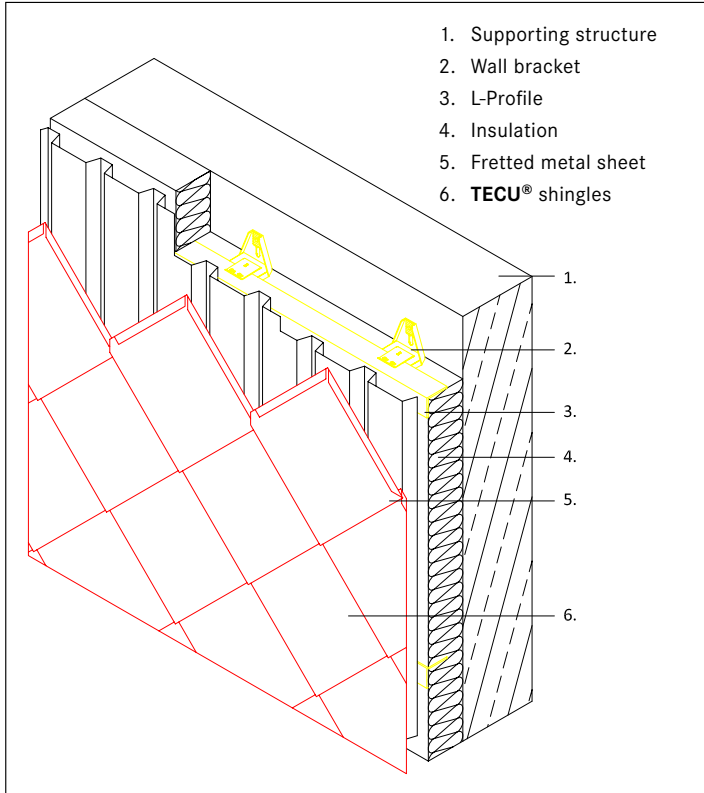


Standard shingles 530 * 530 mm, 600 * 600 mm, 600 * 430 mm: 4 clips

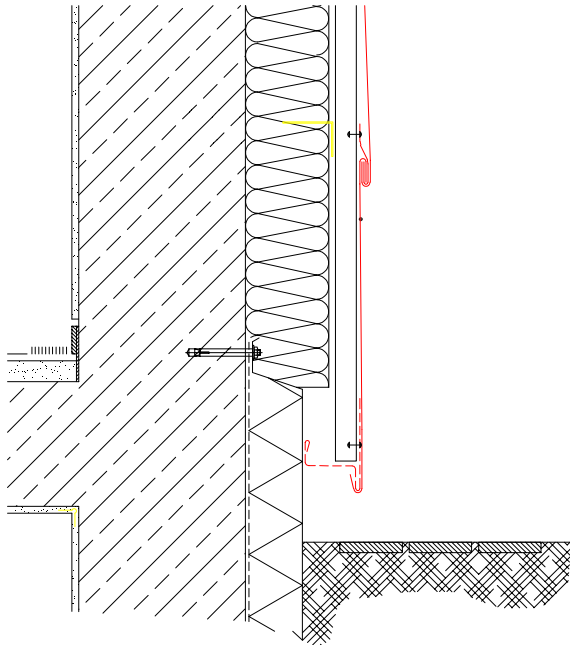
Connection profiles



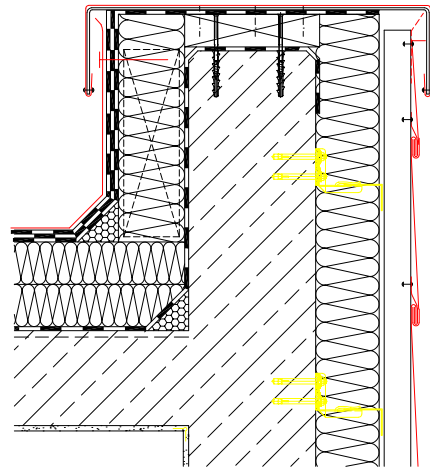
Façade build-up



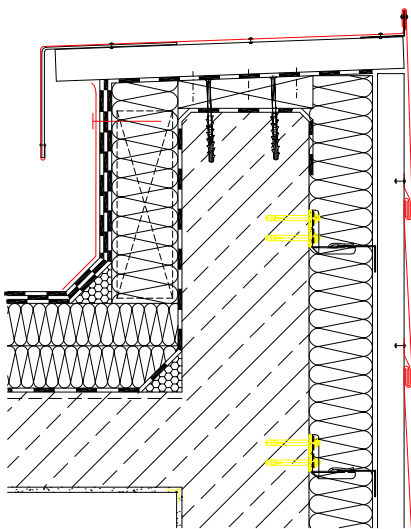
Façade build-up



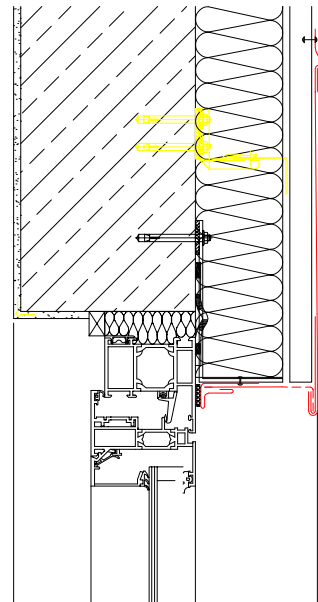
Base of Cladding Abutment



**Capping Interface
(out of one piece)**



**Capping Interface
(out of two pieces)**

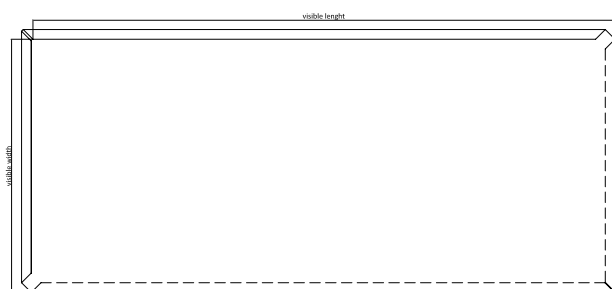


Window Head

Long-shingles



Dimensions & Surfaces



The **TECU**[®] long-shingles have a 180° border on all sides. Two sides are provided with a fold coming forward or with a downstand. The individual elements are available as left or right tiling.

They are installed with clips which are fixed directly either to a wooden or metal substructure. By simply hanging the shingles in the all-round folds it is possible to create a reliable and visually interesting cladding in no time at all.

Ordering size

Long-shingles standard visible widths

Long-shingles visible length

Long-shingles standard lengths for Patina

Material thickness

Installation

length * height of visible part of shingle

430 / 530 / 600 mm

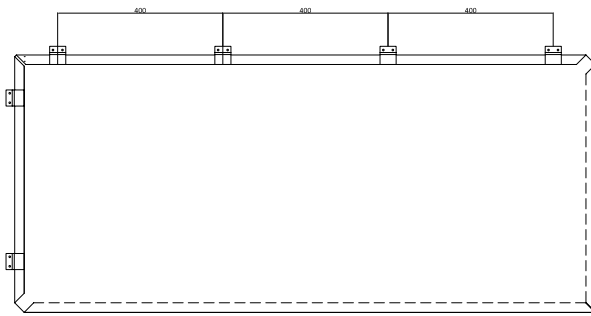
over 600 mm, up to 3000 mm

600 / 930 / 1430 / 1930 / 2930 mm

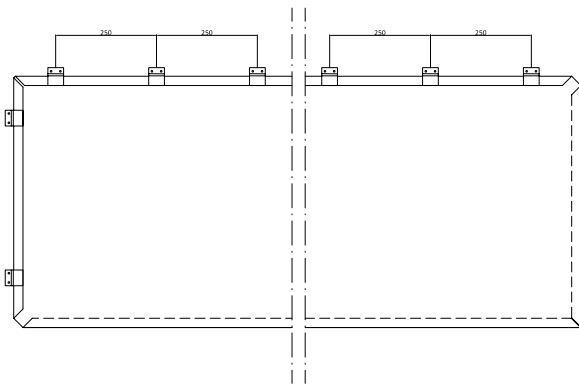
0,7 mm

from bottom to top

Fixing recommendations

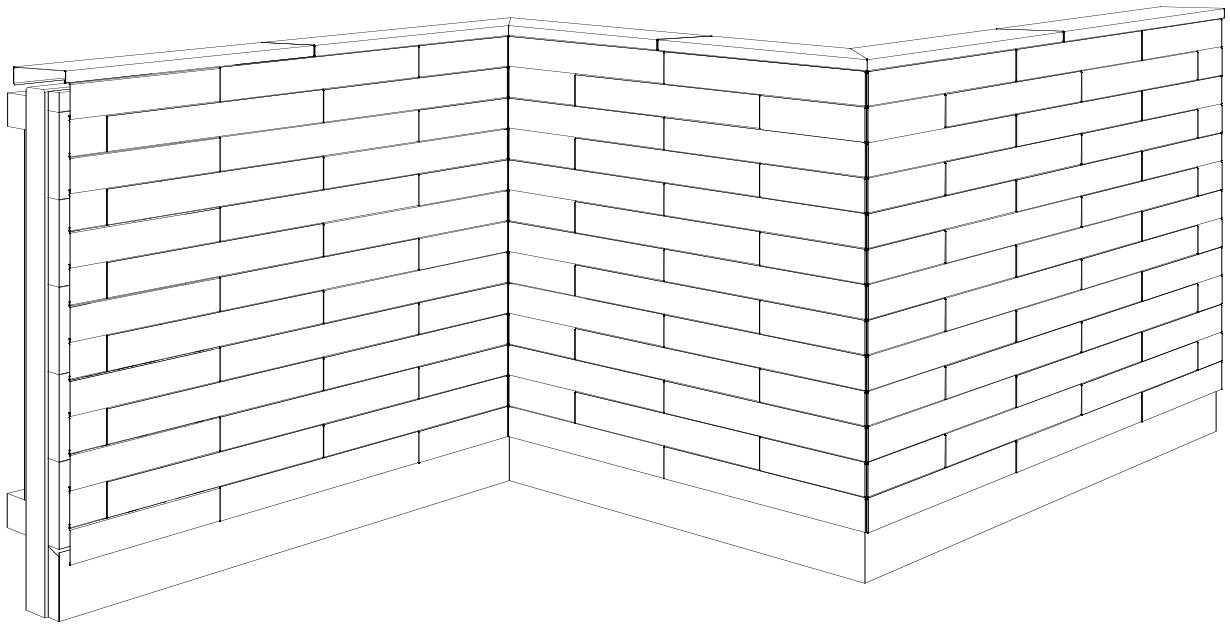


For long-shingles installed on buildings up to 8 m high:
1 clip every 400 mm on long side; 2 clips on short side

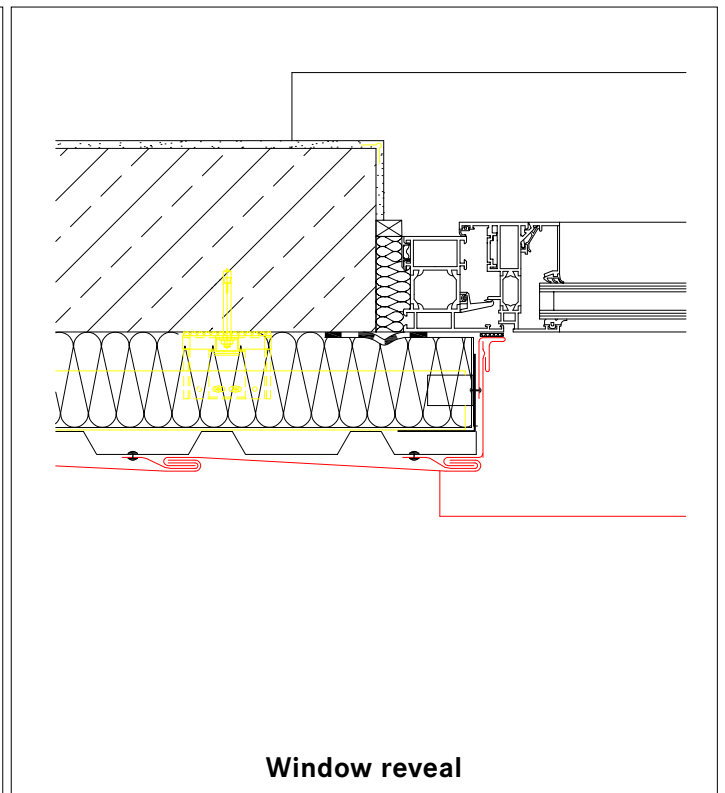
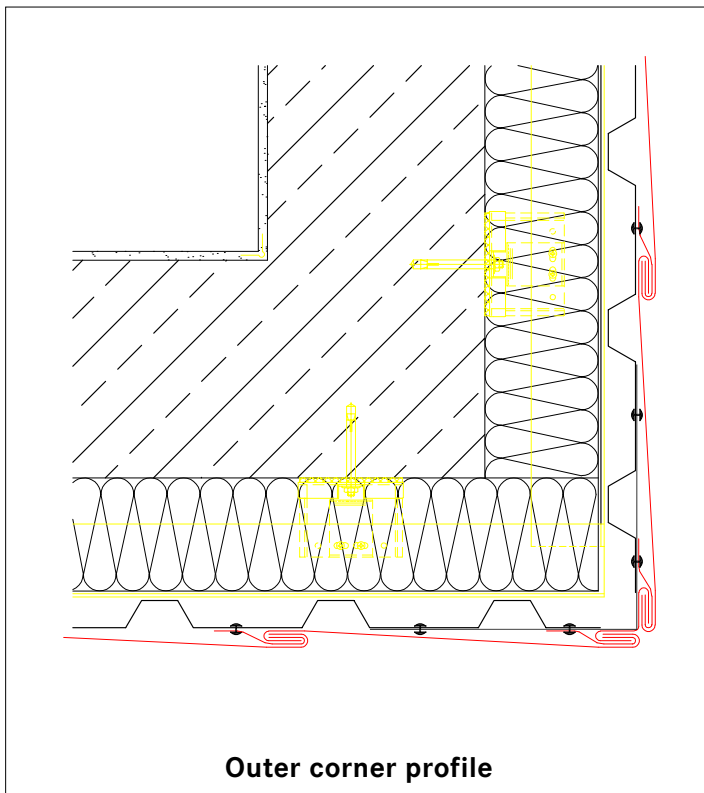
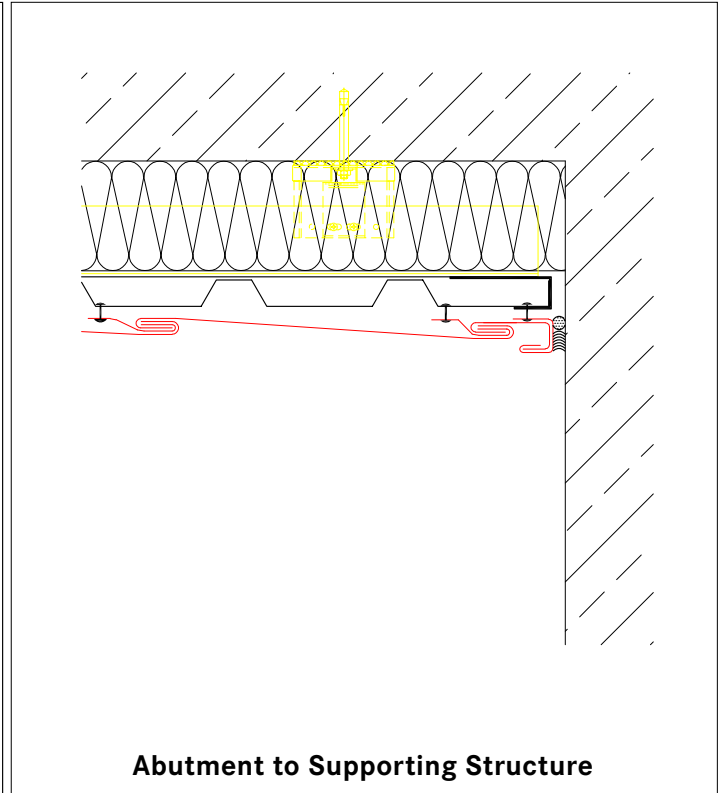
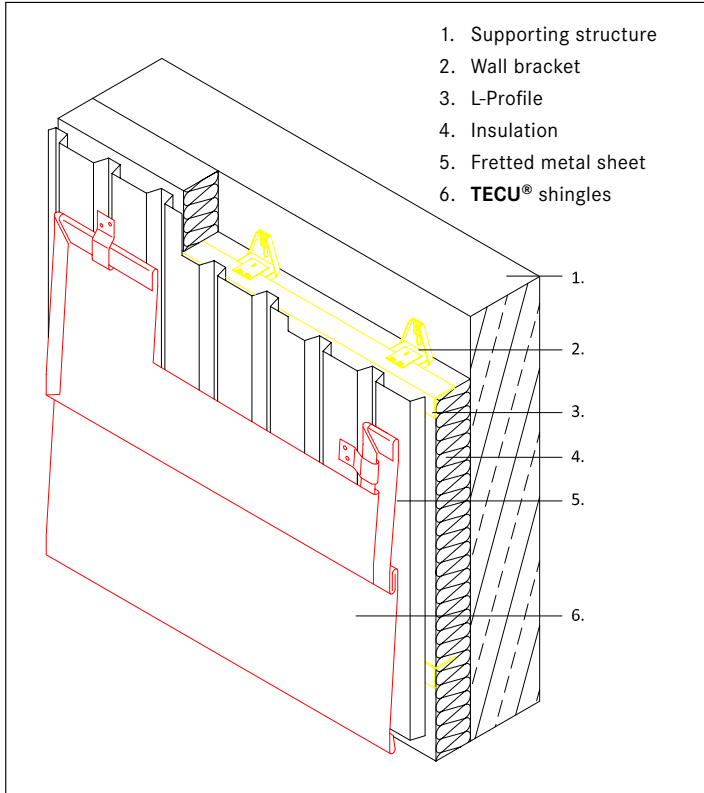


For long-shingles installed on buildings between 8 and 20 m high:
1 clip every 250 mm on long side, 2 clips on short side

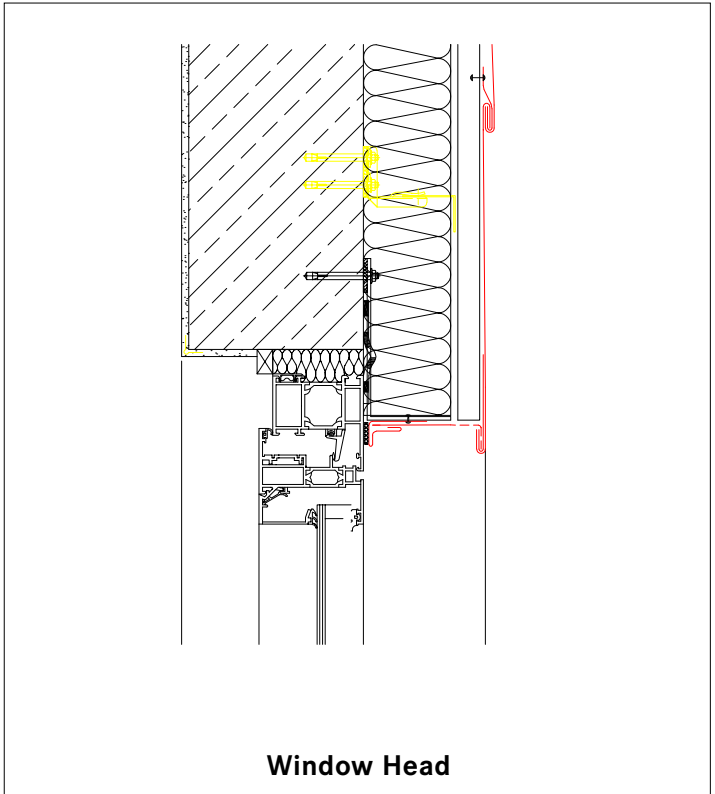
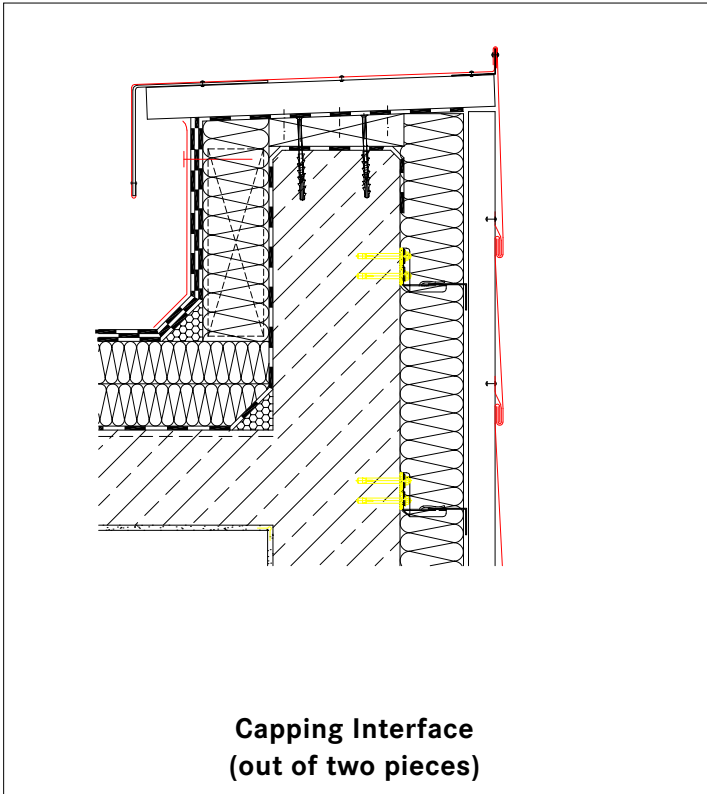
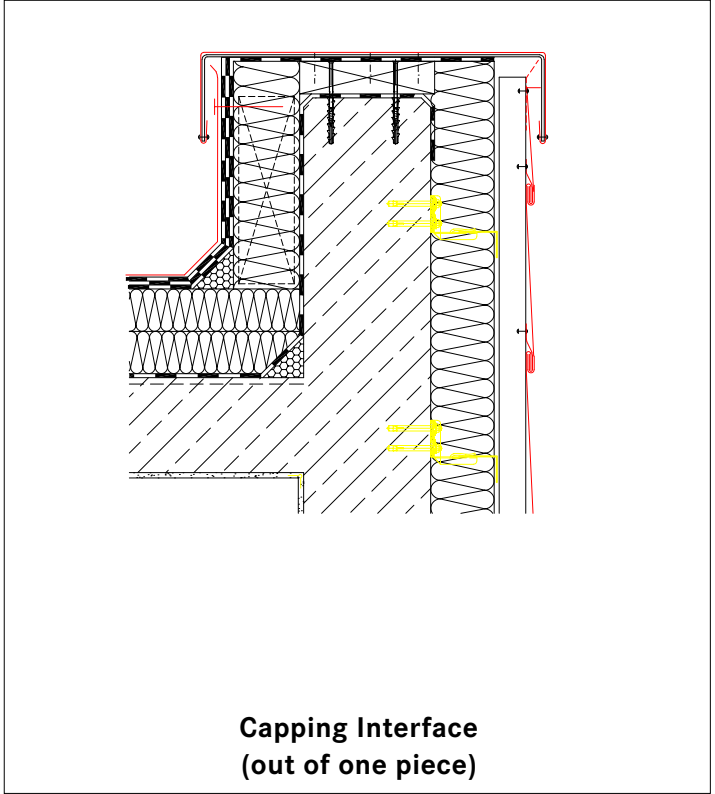
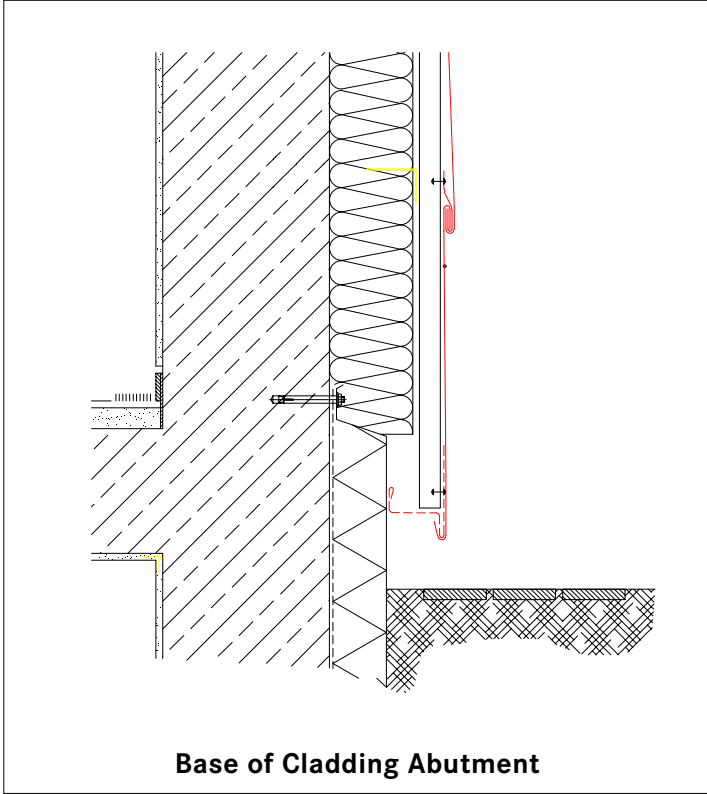
Connection profiles



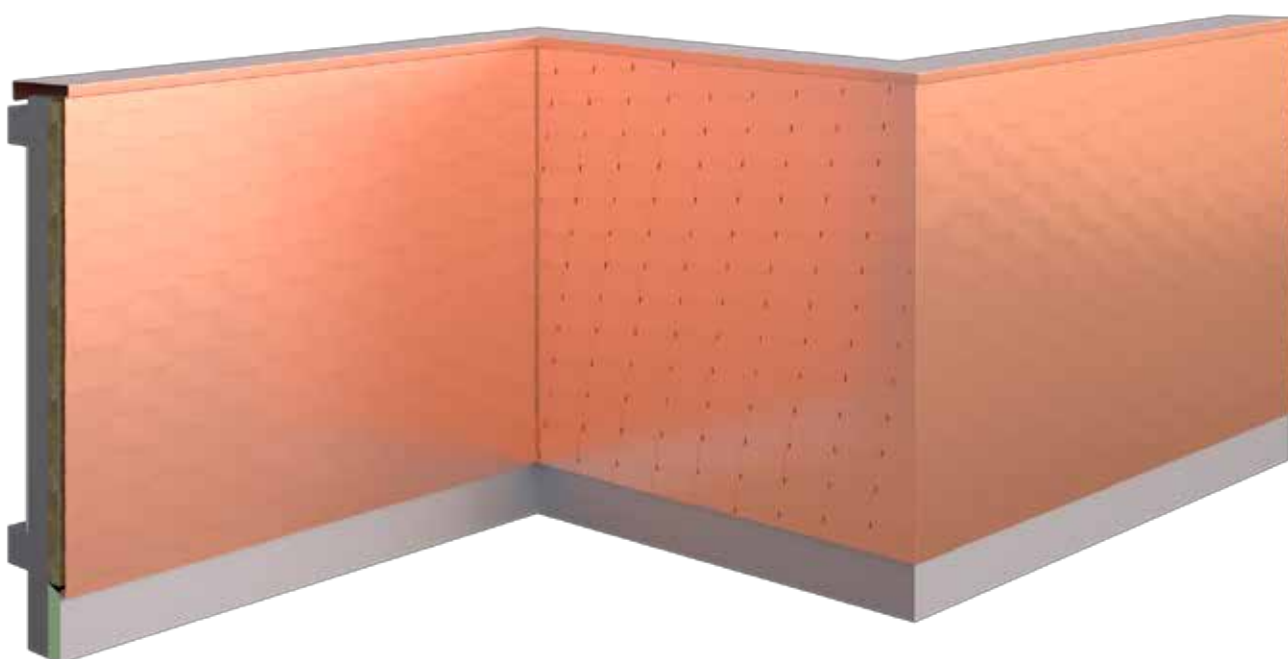
Façade build-up



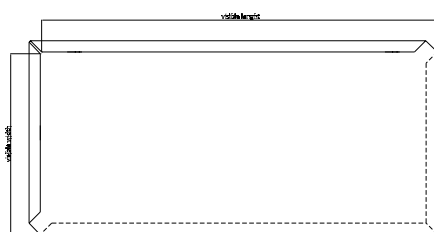
Façade build-up



Overlapping shingles



Dimensions & Surfaces



TECU® copper shingles have a return fold along each edge, two edges are folded forwards and two are folded backwards. The shingles are available for left and right hand cladding. They are fixed to the surface with clips. By simply hanging the shingles in the all-round folds it is possible to create a reliable and visually interesting cladding in no time at all. If the overlapping is more than 80 mm a special clip is needed to install the product, otherwise are applied the criteria for horizontal shingles and long-shingle.

Ordering size

Shingles standard widths

Shingles standard lengths for Patina

Material thickness

Installation

Special fixing elements

length * height of visible part of shingle

430 / 530 / 600 mm

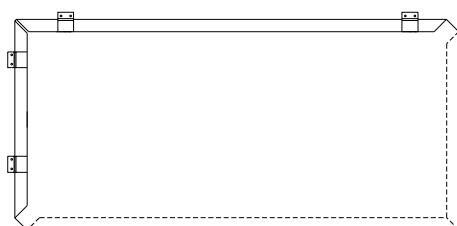
430 / 530 / 600 / 930 / 1930 mm

0,7 mm

from bottom to top

Special clips, needed if the overlap is more than 80 mm

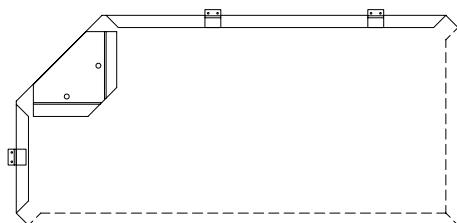
Fixing recommendations



For overlapping shingles up to 600 mm: 4 clips

For overlapping longstrips up to 3000 mm installed on buildings up to 8 m high: 1 clip every 400 mm on long side; 2 clips on short side

For overlapping longstrips installed on buildings between 8 and 20 m high: 1 clip every 250 mm on long side, 2 clips on short side



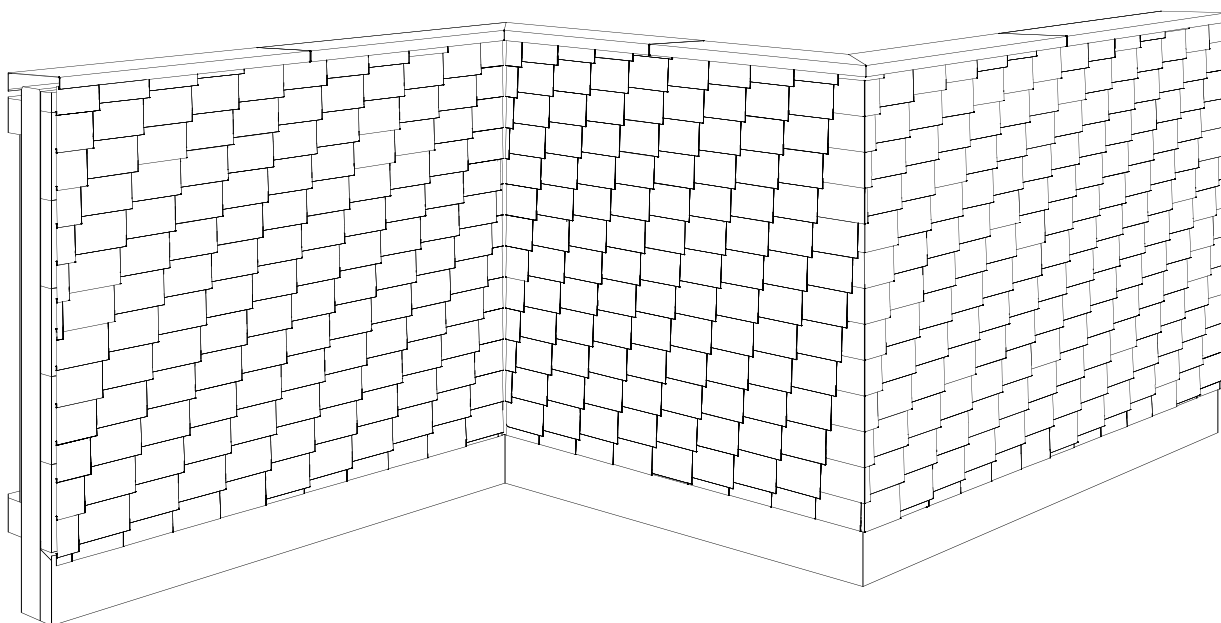
If the overlap is greater than 80 mm also a special clip is needed.

For overlapping shingles up to 600 mm installed on buildings up to 8 m high: 3 clips + special corner clip

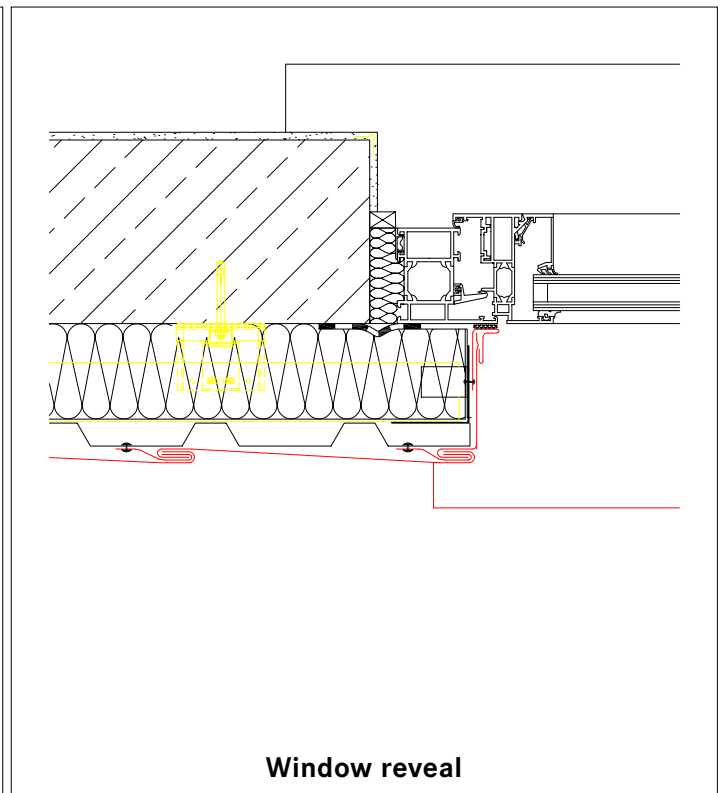
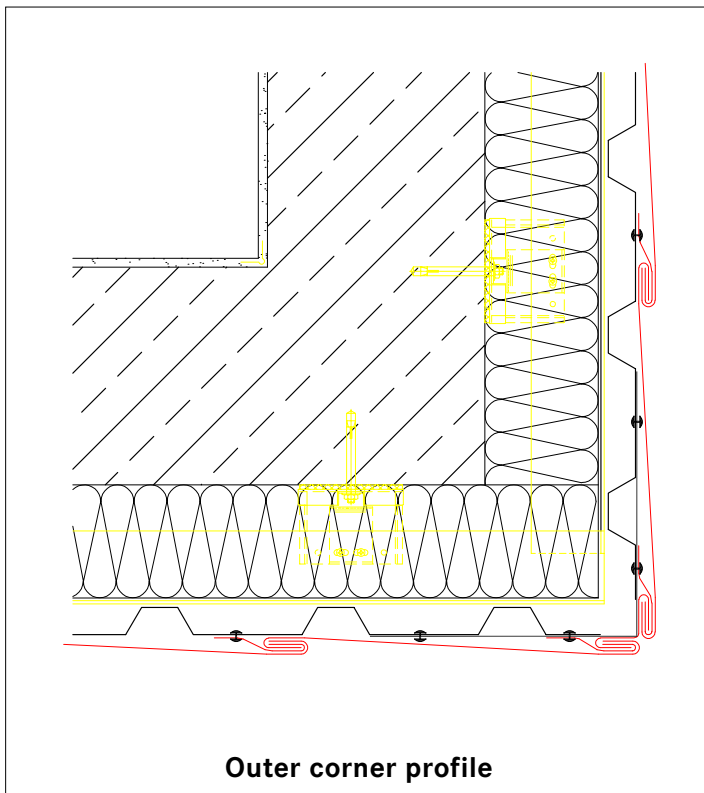
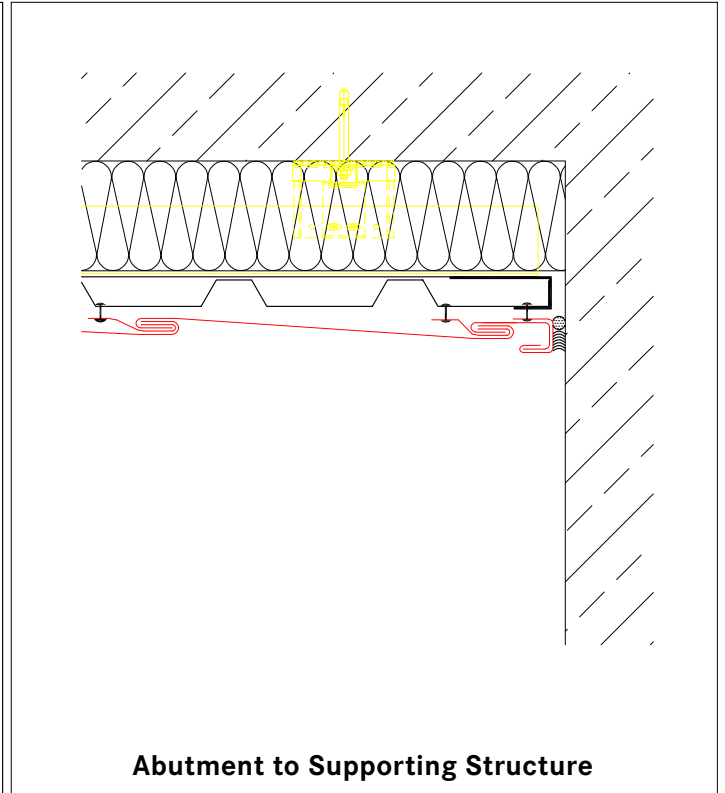
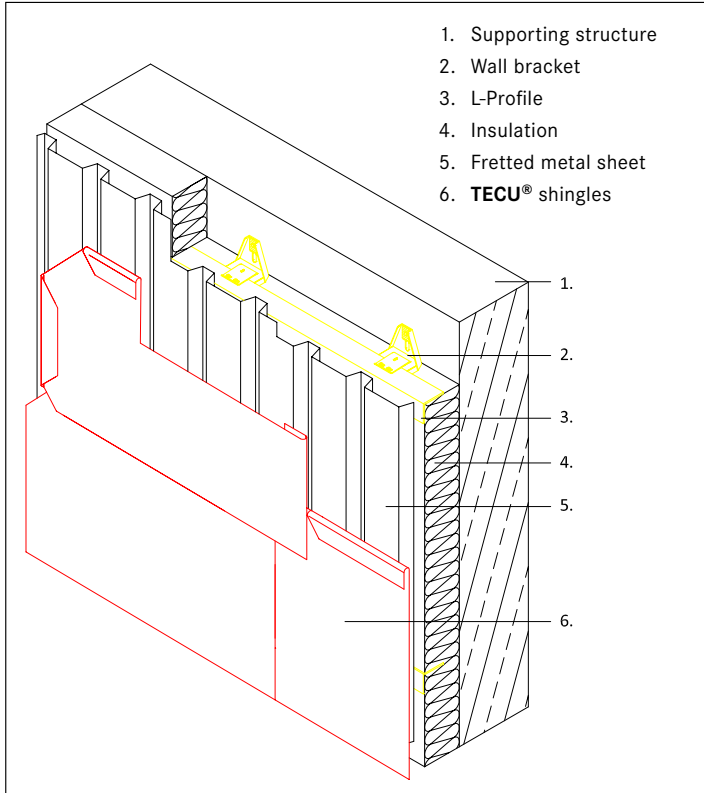
For overlapping longstrips up to 3000 mm installed on buildings up to 8 m high: 1 clip every 400 mm on long side; 2 clips on short side + special corner clip

For overlapping longstrips up to 3000 mm installed on buildings between 8 and 20 m high: 1 clip every 250 mm on long side, 2 clips on short side + special corner clip

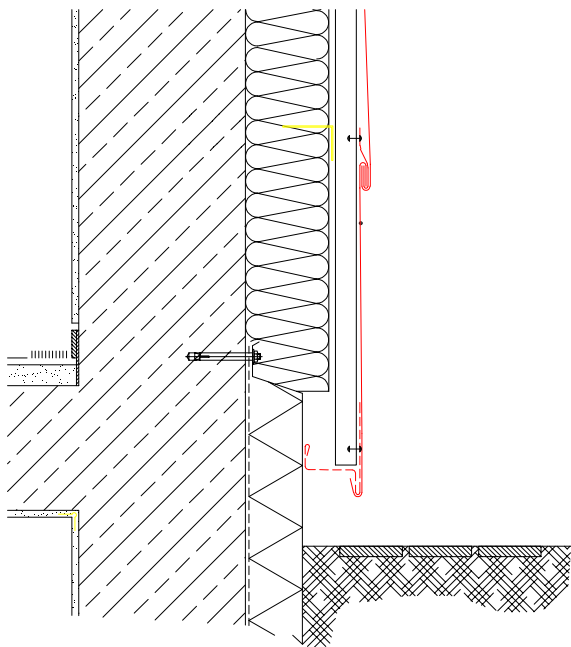
Connection profiles



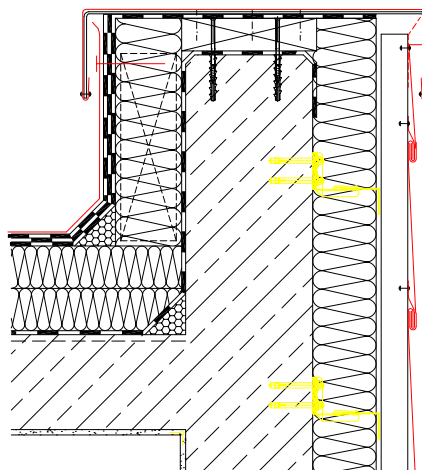
Façade build-up



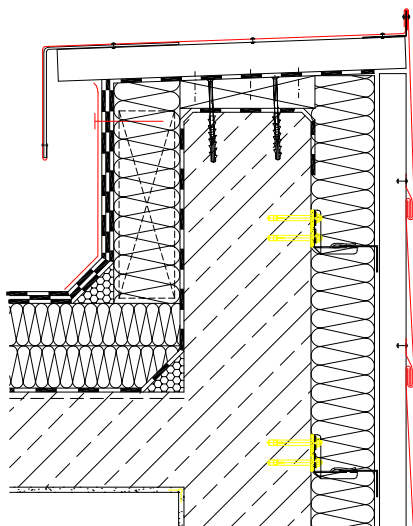
Façade build-up



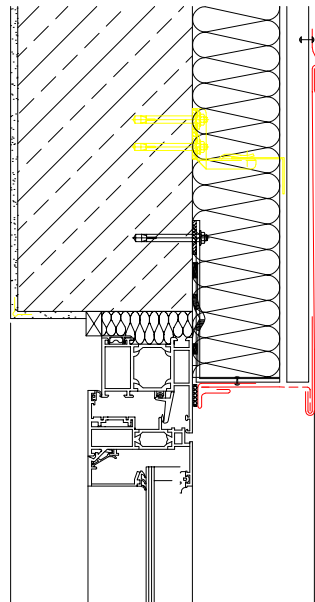
Base of Cladding Abutment



**Capping Interface
(out of one piece)**

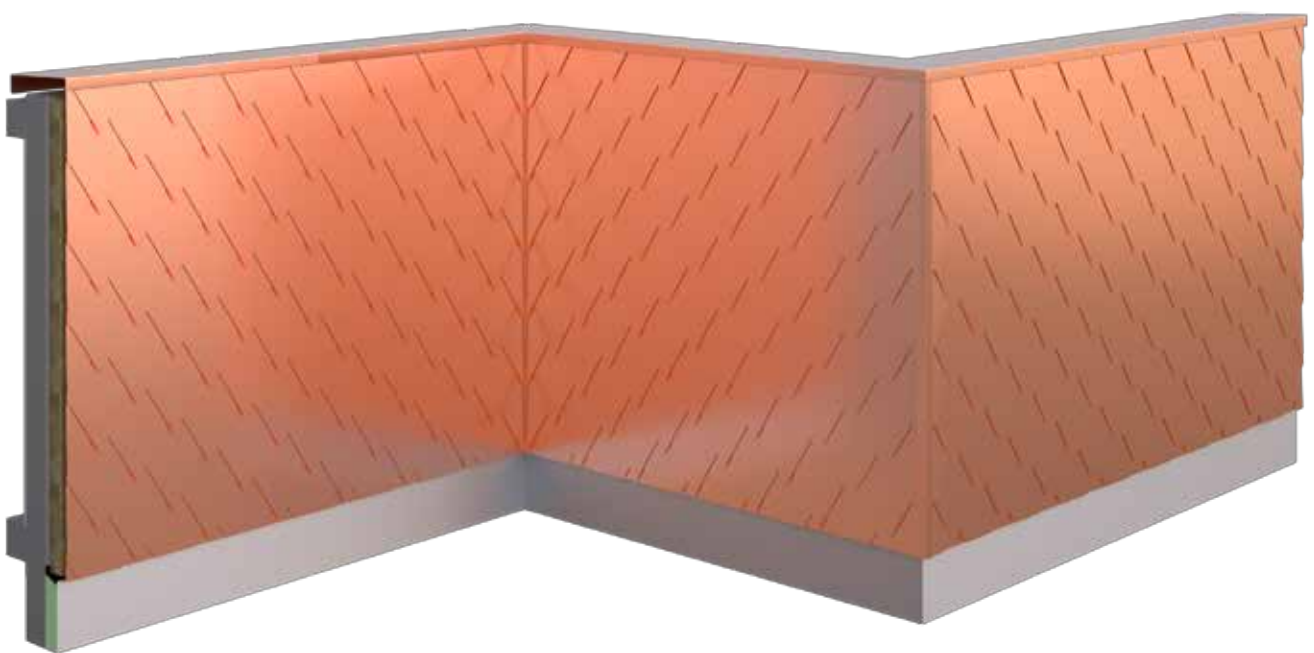


**Capping Interface
(out of two pieces)**

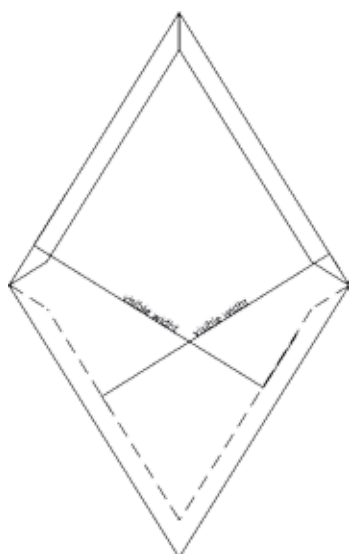


Window Head

Rhomboids - Sharp edges



Dimensions & Surfaces



As an alternative **TECU**[®] system shingles which are available in rectangle or quadratic form the variant of rhomboids offers further creative options. According to the preferred visual appearance rhomboids are available in acute-angle in sharp edge rhombus shape or rounded shingle in rhombus shape. The processing and the laying of the rhomboids are identical to those of the shingles.

Rhomboids standard dimensions

Material thickness

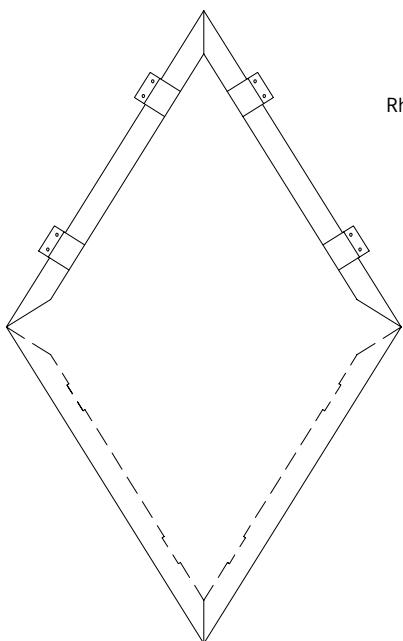
Installation

265 x 265, 330 x 330, 430 x 430, 530 x 530 and 600 x 600 mm (measured diagonally)

0,7 mm

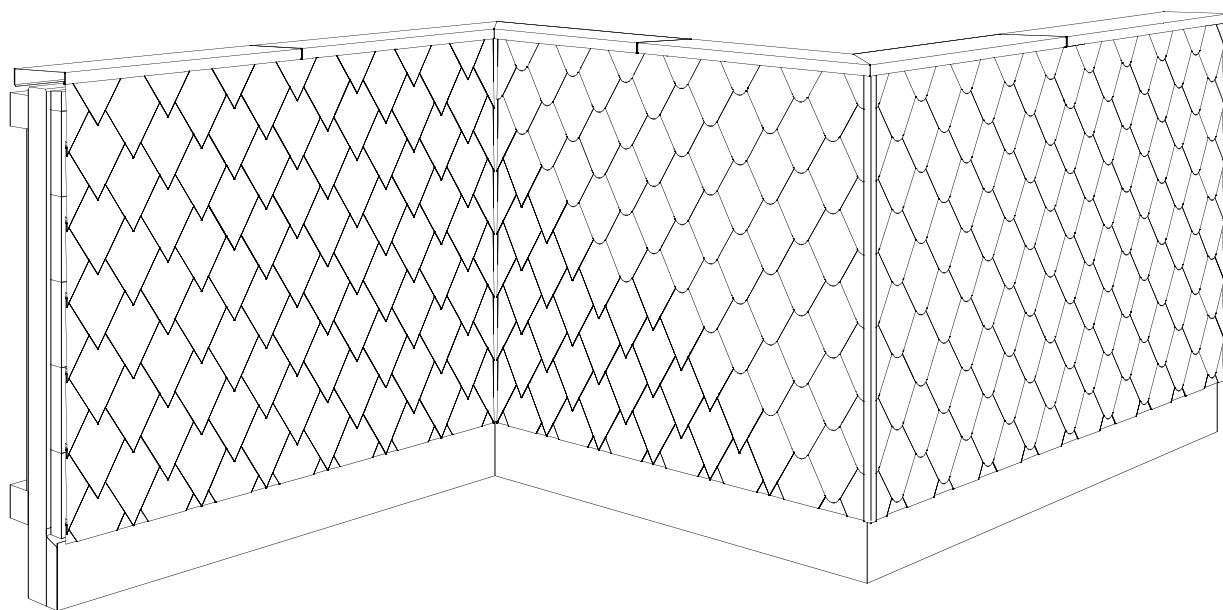
from bottom to top

Fixing recommendations

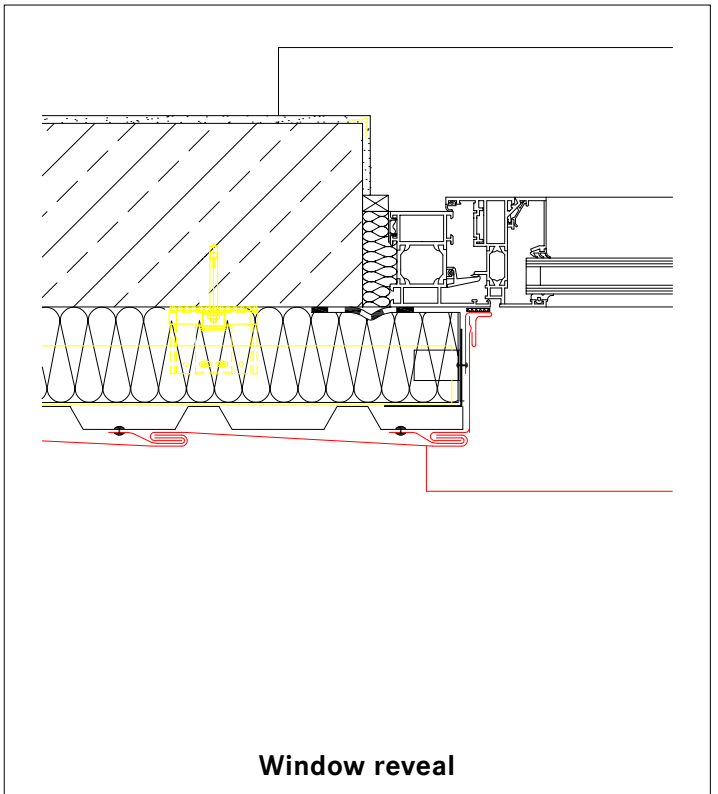
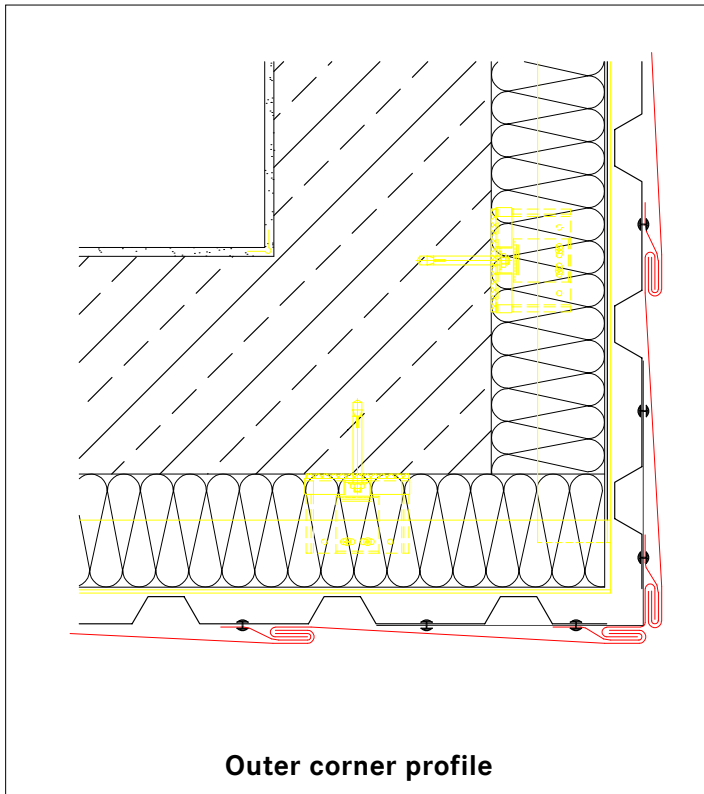
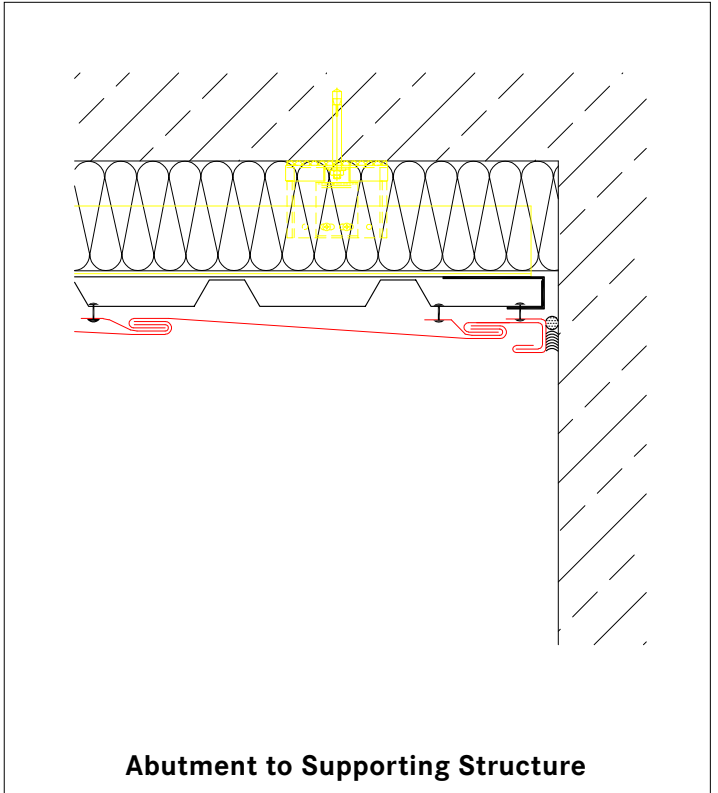
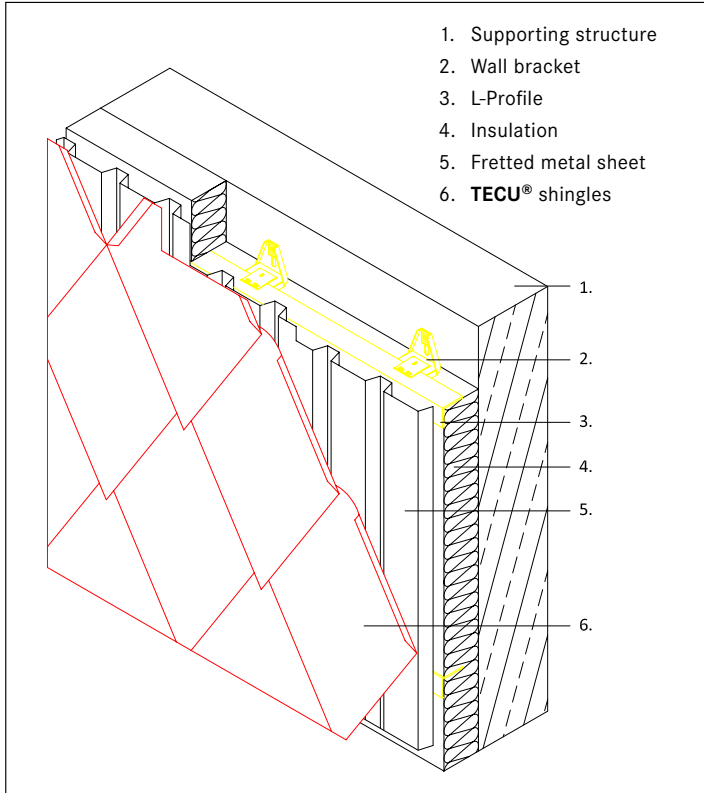


Rhomboids, sharp edge: 4 clips per rhomboid

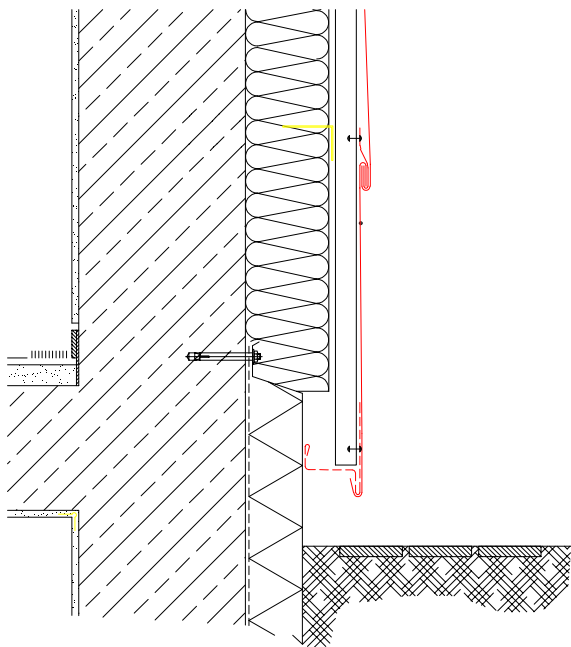
Rhomboids - sharp edges Connection profiles



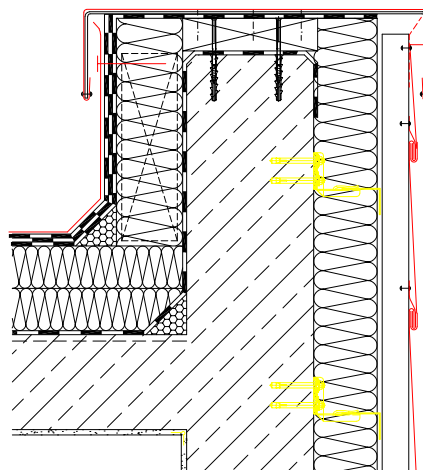
Façade build-up



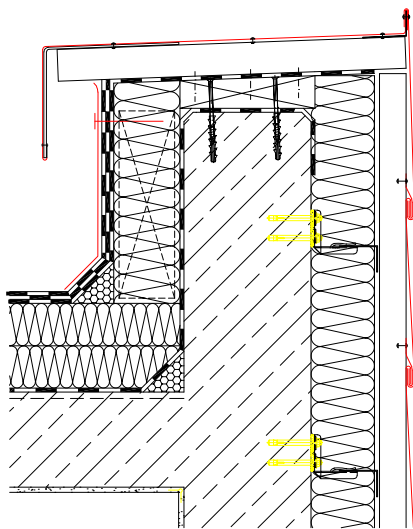
Façade build-up



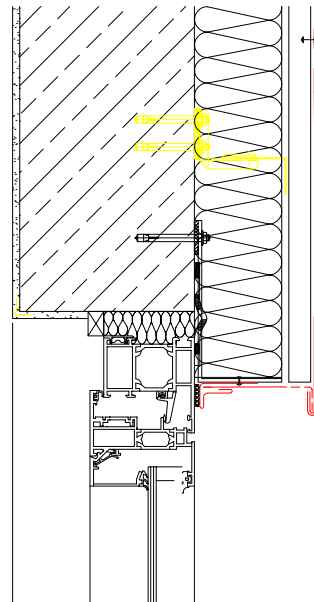
Base of Cladding Abutment



**Capping Interface
(out of one piece)**

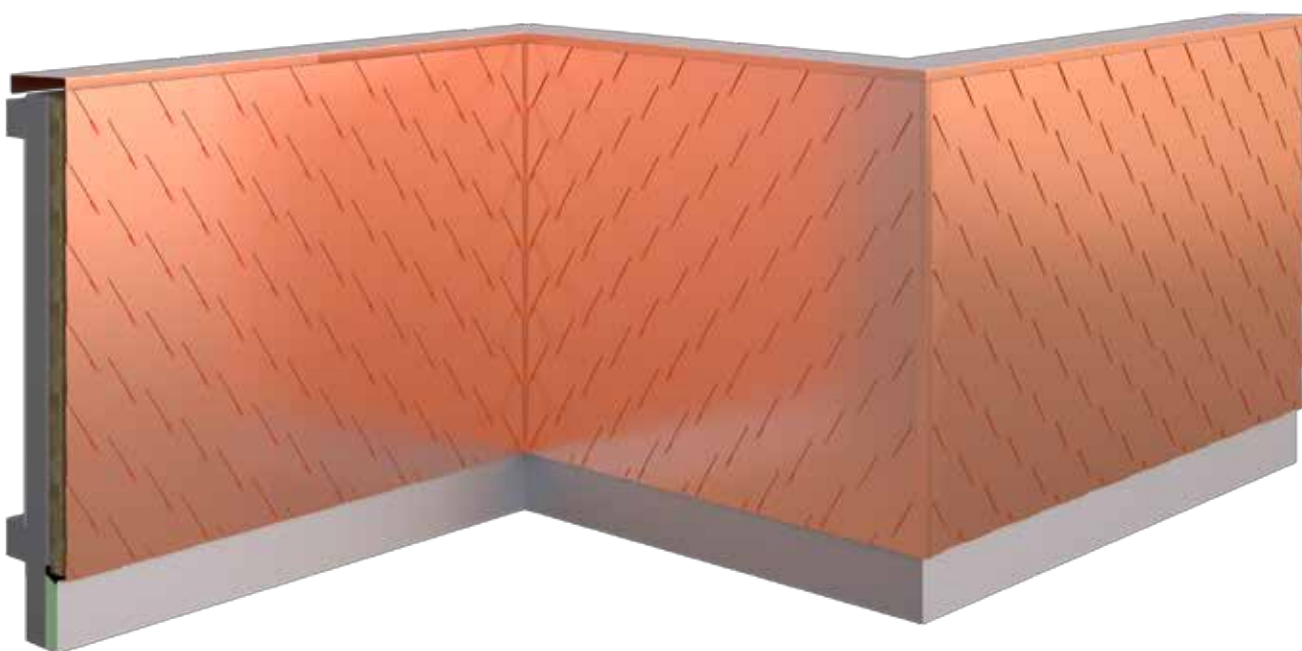


**Capping Interface
(out of two pieces)**

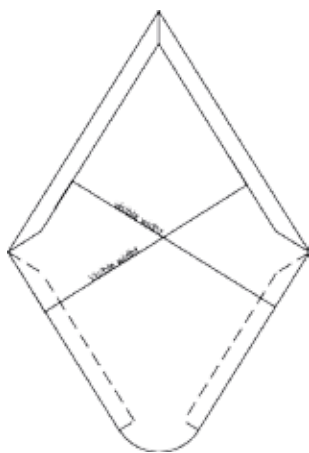


Window Head

Rhomboids - Round edges



Dimensions & Surfaces

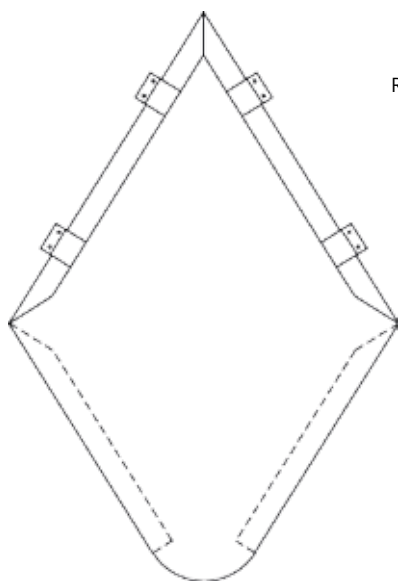


As an alternative **TECU**[®] system shingles which are available in rectangle or quadratic form the variant of rhomboids offers further creative options. According to the preferred visual appearance rhomboids are available in acute-angle rhombus shape or rounded shingle shape. The processing and the laying of the rhomboids are identical to those of the shingles.

Rhomboids standard dimensions
Material thickness

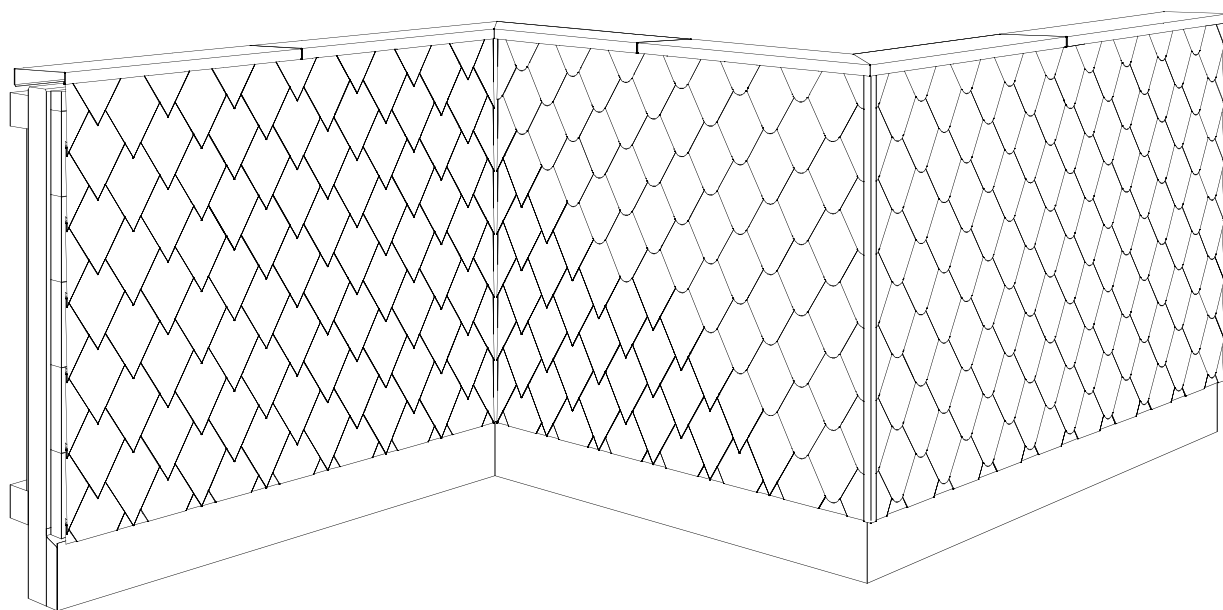
410 * 410 mm
0,7 mm

Fixing recommendations

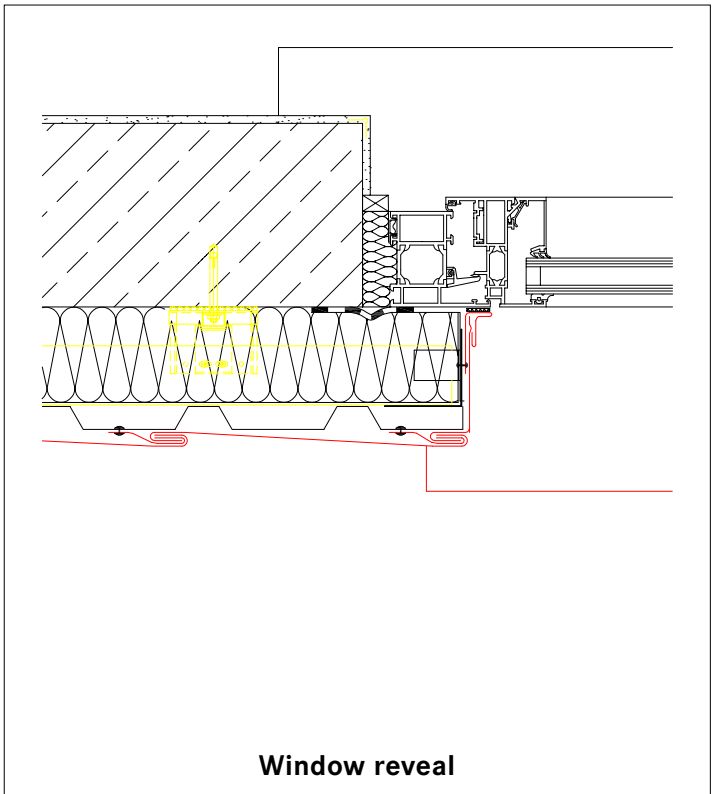
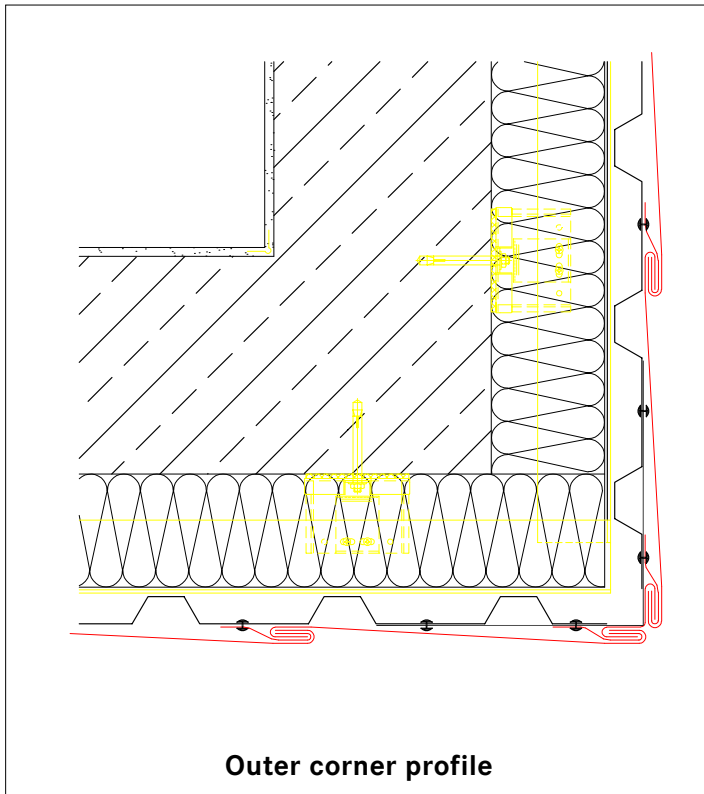
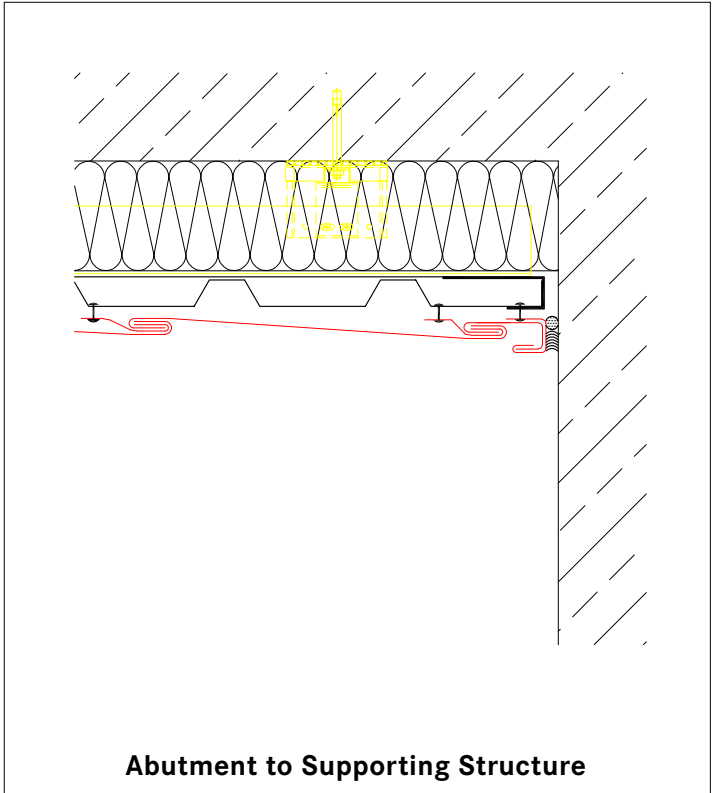
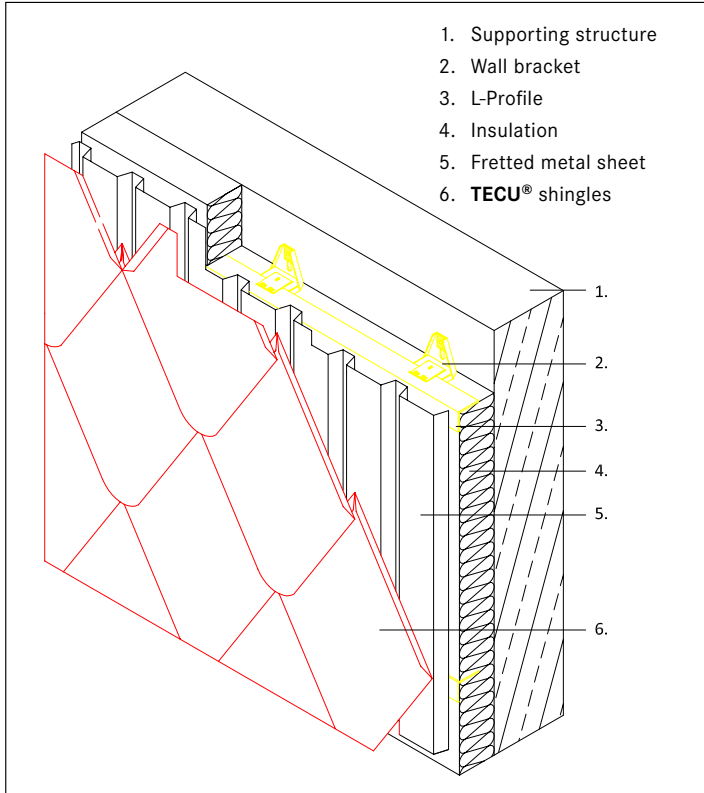


Rhomboids, round edge: 4 clips per rhomboid

Rhomboids - round edges Connection profiles



Façade build-up



Façade build-up

